

## Cornell University

College of Agriculture and Life Sciences  
Ithaca, New York



1



2

The new building responds to the existing Agriculture Quad by reinforcing the adjacent four-story buildings both in terms of scale and materials as well as by completing the exterior space, rendering it as an “outdoor room”. The building straddles the dividing line where Cornell’s state campus meets its endowed campus. It redefines Bailey Plaza as an urban space and the quadrangle as an enclosed outdoor room.

The 130,000-square-foot building is a four-story linear structure. It houses administrative offices on the first three floors and the Landscape Architecture School on the fourth floor. Crowning the building is a barrel-vaulted studio space with double-height windows facing the quadrangle and a framed roof terrace facing Bailey Plaza.

A connecting bridge provides access to the Landscape department from the Academic building and frames a three-story gate to the quadrangle that recalls similar college gates on the campus. A primary pedestrian pathway from the quadrangle to the campus, the gate forms one of the main entrances to the Academic building; the other is at the corner of Tower Road and Garden Avenue.

The archway divides the building into two wings: Roberts Hall, an administration building that encloses the quad, and Kennedy Hall, a classroom and faculty office building whose south end faces a major intersection.

A two-story galleria with a balcony mezzanine is the primary interior circulation space of Kennedy Hall, connecting the two entrances and providing access to classrooms, a 600-seat lecture auditorium, and a 400-seat dining facility. The third and fourth floors house faculty offices and teaching-support space.

On the exterior, modular brick in three shades of earth tones recalls the texture of adjacent campus buildings. The windows are teak, with cast-stone sills and copings, and the barrel-vaulted roof in standing-seam lead-coated copper.

The four-story building addresses the pertinent issues of a major college structure—context, material, scale, and image—in a manner that supports both a new program and the traditions of the school.

1 Entry gate from Bailey Plaza

2 South facade





*East facade from quadrangle*





*Dining Hall*



*Auditorium*



*Landscape Architecture studio*

## Cornell University

College of Agriculture and Life Sciences

### Key Project Information

- 600-seat lecture auditorium
  - 400-seat dining facility
  - barrel-vaulted studio space with double-height windows
  - roof terrace
  - faculty offices
  - seminar rooms
  - administrative offices
  - contemporary yet contextual intervention in an Ivy League campus
- 
- completion 1991
  - gsf 130,000

*"We are indeed most fortunate to be completing, at this time, what I consider one of the finest buildings constructed during the twenty-six year history of the Fund."*

*Elwin W. Stevens, State University Construction Fund*

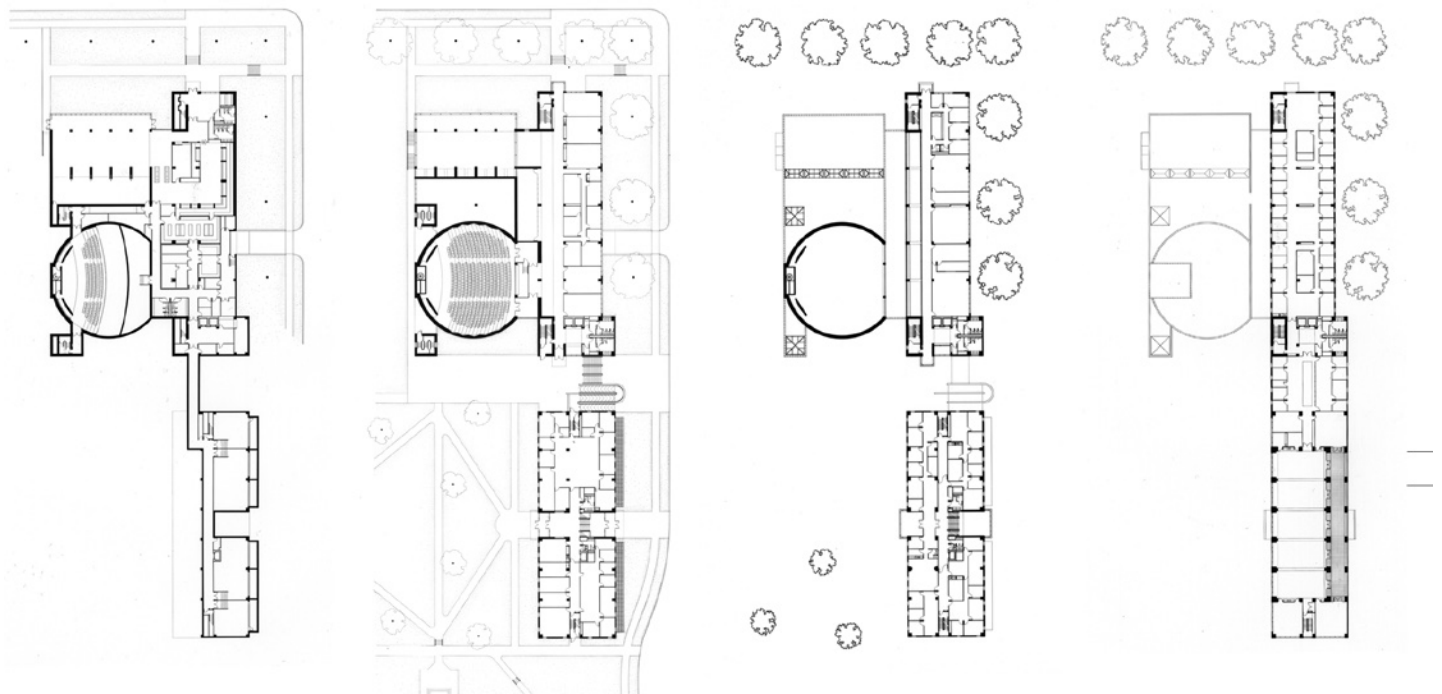
*"If Cornell's latest additions underscore anything about campus-making, it is the architects' strong belief that traditional campuses can be expanded—and strengthened spatially—with original yet compatible Modern buildings that look forward, not back."*

*Architecture, January 1991*

*"A subtle geometrical composition in natural materials"*

*Jayne Merkel, The Cincinnati Enquirer, February 17, 1988*

*1991 Distinguished Architecture Award, AIA-New York Chapter*



Lower level

Ground level

Second level

Third level