

SBK Entertainment World, Inc.

Office Interiors
New York, New York



1



2



3

This 42,000-square-foot office for a record and music publishing company occupies two floors of a typical Sixth Avenue office building. The design of the interior centers on a two-story entry and reception space, where a floor of honed black granite squares establishes a system of variously dimensioned grids. This device lends a consistent formal shape to the entire office interior and establishes a network of directional cues easing one's navigation through the entire complex. Along the corridors that circle the two expansive floors, grids become reference points signaling the way back to entrance foyers and other communal spaces.

Beginning in the reception foyer, a tightly articulated grid drawn by shallow reveals in the surrounding oak walls has been pulled apart to create a broad cylindrical oak stair with a smaller-scale, open-grid banister and granite treads that connects the elevator lobbies and the internal corridor-gallery spaces with offices on the perimeter. This system persists throughout the space, cropping up in gridded oak doors with sandblasted glazing, coffered ceilings and interior windows of glass block.

SBK's corridors exemplify the essence of the architectural intervention. Running counter to the more rigorous framework created by the grids, the corridors form more complex compositions. Their design both explores and exploits the notion that such channels are similar in purpose and function to an urban street. Asymmetry often prevails in these areas, expressed through wall elevations encompassing round columns, spiral staircases and gently curving surfaces, with ceiling plans carefully reflected by boundary and material changes in the floor below. All of these elements consciously erode the regularity of the grid system while existing comfortably within its framework.

The design of SBK's various offices illustrates the idea that these spaces, too, should be part of the larger interior design whole, but also have its own, distinct personality. A custom modular office credenza, for example, was designed to lend itself to a host of variations and options for each employee. This single piece of furniture, installed along an interior office wall, can be adapted to a variety of storage and filing needs. Much of the furniture was custom designed.

1 *Entry-reception space*

2 *Office corridor with secretary workstations*

3 *Screening room*



Main stair

SBK Entertainment World, Inc.

Office Interiors



President's office

SBK Entertainment World, Inc.

Office Interiors

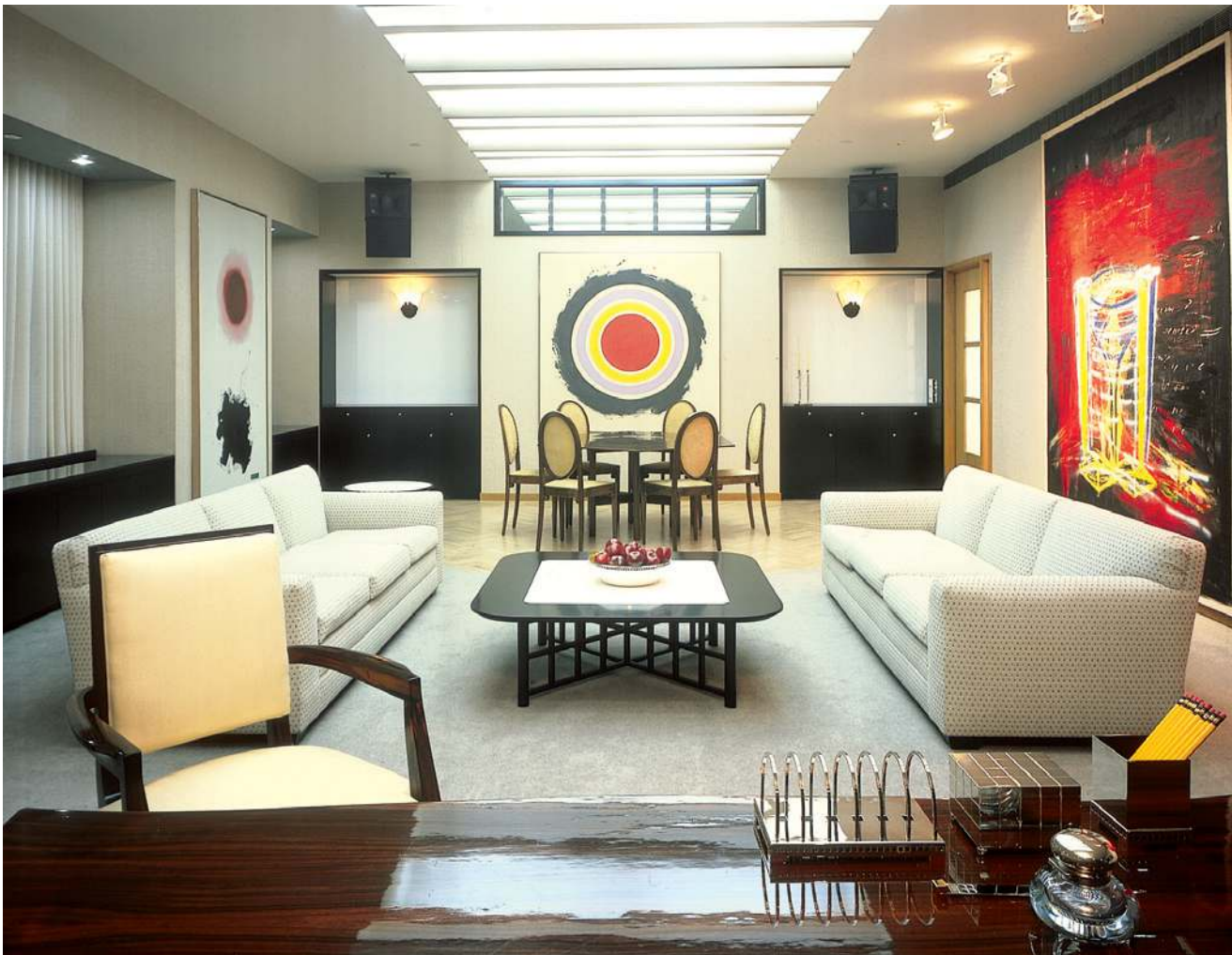
Key Project Information

- double-height reception foyer
- executive suites with panoramic views
- screening room
- projection room
- film library
- reference library
- computer room
- flexible cafeteria/meeting room
- full-service kitchen and pantry
- staff lounge
- microfiche room
- archival storage space
- custom-designed furnishings

- completed 1988
- gsf 42,000

"The firm headed by Charles Gwathmey and Robert Siegel, recent inductees into the Interior Design Magazine Hall of Fame, has created offices designed on the premise that interior design should and can go beyond a mere first-impression take on a company's self image. [...] The interior conscientiously serves SBK's employees and visiting clients as well as the propagation of more abstract notions of the corporate image."

Interior Design, February 1989



Chairman's office