

The City University of New York

The Graduate Center
New York, New York



1



2



3

The Graduate Center houses the graduate school campus on twelve levels of the neo-classical landmark B. Altman's Department Store Building. It includes the restoration of selected historic interior building elements, significant structural modifications to accommodate long-span spaces and a complete technological infrastructure replacement.

Public areas; an auditorium, recital hall, black box theater/screening room, TV studio, art gallery, bookstore/coffee bar, and conference center, are located on the lower levels.

The academic and research areas, located on the middle five floors, include classrooms, lecture halls, computer labs, offices, and study areas. The top floors house administrative offices, a board room, and a conference center, organized around

the central dining facility with views of the Empire State Building.

The academic heart of the campus is the 92,000-square foot research library which occupies the entire second floor and portions of the ground and lower levels. It has its own internal vertical circulation system and a separate entrance from the main lobby.

Library facilities include open shelving for over 250,000 periodicals and monographs, 1,000 work stations of which more than half are wired to support either lap-top or desk-top computers, fully equipped state of the art Electronic Training Rooms, group study areas, miscellaneous special collection rooms, dissertation archives and music listening stations—all supporting the diverse and highly specialized academic departments.

- 1 *Front façade*
- 2 *Restored vestibule*
- 3 *Elevator lobby*



Main lobby



Martin E. Segal "Black Box" Theatre Center

The City University of New York

The Graduate Center



Baisley Powell Elebash Recital Hall



Dining commons



Conference room



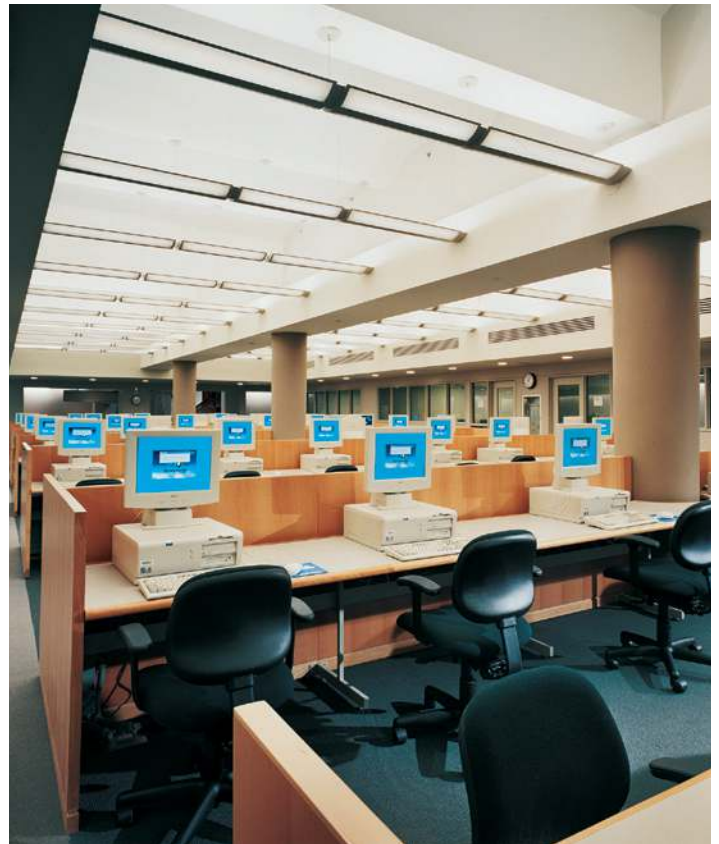
Harold M. Proshansky Auditorium

The City University of New York

The Graduate Center



Library ground floor full service desk



Library Electronic Commons, concourse level



Typical reader workstations

The City University of New York

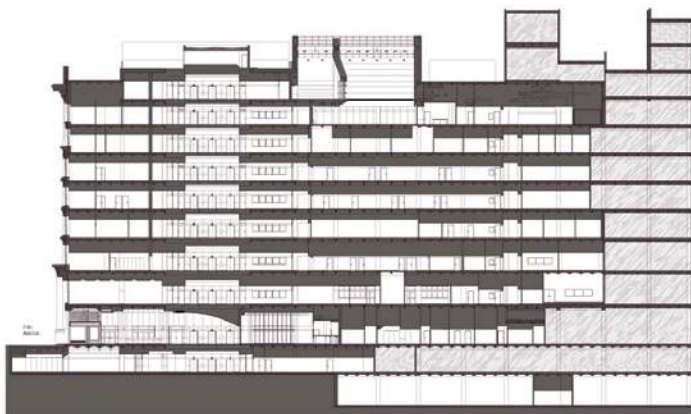
The Graduate Center

Key Project Information

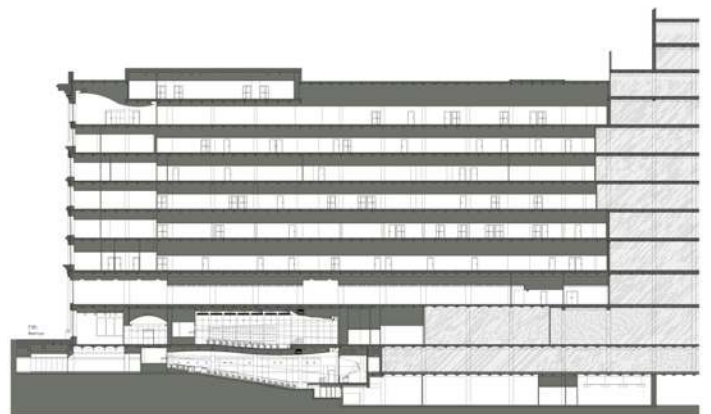
- historic restoration of designated areas with complete technological infrastructure replacement
 - auditorium
 - recital hall
 - black box theater/screening room
 - TV studio
 - art gallery
 - bookstore/coffee bar
 - conference center
 - classrooms, computer labs, offices and study areas
 - 92,000 sf research library with open shelving for over 250,000 periodicals and monographs and 1,000 workstations
-
- completion 2000
 - gsf 582,000



CUNY TV production studio



Section



Section