

Louise Wells Cameron Art Museum

Wilmington, North Carolina



1



2



3

The Louise Wells Cameron Art Museum is the primary visual arts center in southeastern North Carolina with a permanent collection of 18th, 19th and 20th Century North Carolina and American art. The museum is also renowned for its temporary exhibitions of North Carolina and national artists.

The new 35,000 s.f. facility includes exhibition galleries, a multi-purpose auditorium, painting and ceramics studios, an arts research library and an outdoor sculpture court. Support facilities include a museum shop, art storage areas, a cafe, and staff offices.

The site is exceptional not only because of its history—with remains of trenches from the Civil War battle in which the Union forces captured the city of Wilmington—but also due to its location at the confluence of two major regional arteries (Independence Boulevard and 17th Street). The building serves as its own “signage” for the entire institution.

As the only art museum in a 100-mile radius, the new facility represents a major destination in North Carolina.

1 *East Façade*

2 *Entry*

3 *Galleria*



Galleria



Flexible Meeting/Lecture/Entertainment Space

Louise Wells Cameron Art Museum



Changing Exhibition Gallery

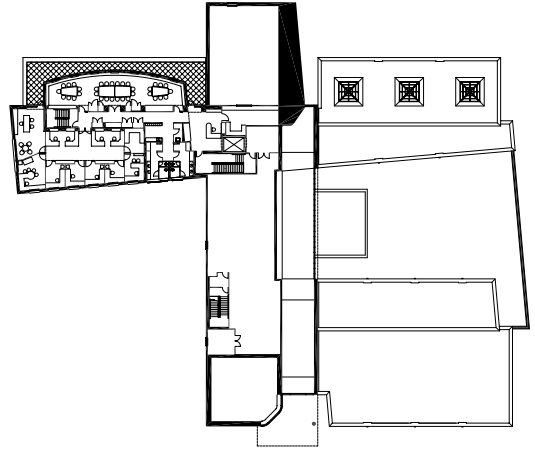


Permanent Collection Gallery

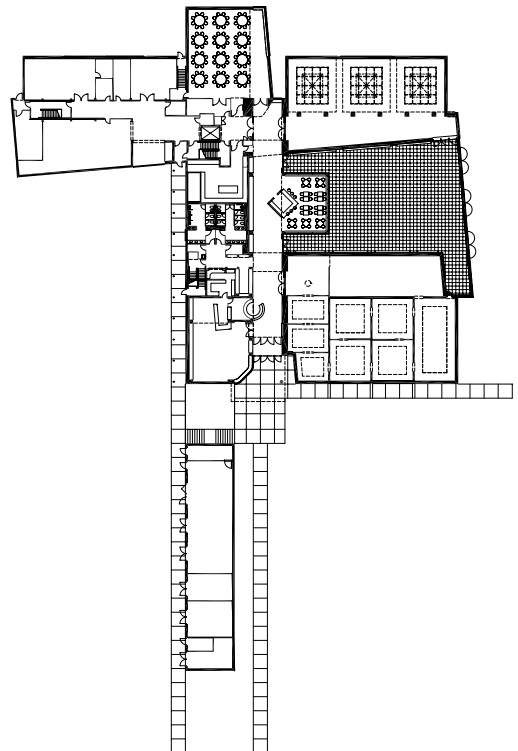
Louise Wells Cameron Art Museum

Key Project Information

- ten permanent collection galleries
 - 4,200 square feet of skylit exhibition galleries for changing exhibitions
 - enclosed sculpture courtyard with café
 - sculpture park for changing installations
 - arts research library
 - museum shop
 - 100-seat flexible lecture theater/auditorium/reception space
 - 2 painting studios
 - ceramics studio
 - student gallery for adult continuing education and children's art programs
 - archival storage facilities
 - staff offices
-
- completion 2002
 - gsf 43,000



Second level plan



Ground level plan



Galleria/Cafe