

## THE CROCKER ART MUSEUM

Addition and Renovation  
Sacramento, California



1

The existing Crocker Art Museum is a 45,000 square-foot complex made up of the historic Crocker Art Gallery, family mansion and various later additions. Their current facilities are outgrown and inadequate. The Crocker Art Museum's goal was to elevate the museum to the level of a world class facility through the re-programming, restoring and upgrading of existing facilities, and expanding the museum by 100,000 additional square feet.

The compositional strategy of the Crocker Museum of Art addition and renovation was to establish a new and unique iconic presence for the new addition, while framing the existing complex in a visual and physical dynamic, creating a collaged image for both the new and historic structures.

The new addition is rotated on a due north/south axis, disengaging it from the existing orthogonal street grid and Crocker complex, which reinforces the counterpointal siting and massing.

The ground floor contains a new entry off O Street, which simultaneously accesses the museum store, the lobby, the reception desk, the double height multi-use gallery/reception space, which opens to the new courtyard, the café, the public meeting rooms, the auditorium, the loading dock and service support spaces.

1 View from O Street

Also accessible from the ground floor is a new connection/circulation space to the Herold Wing, which interconnects service and public access between the new addition and the existing buildings. The connection, which occurs on all three floors, re-facades the Herold Wing from the new courtyard, forming a consistent architectural image for the space.

The second floor is occupied by the administrative staff offices, art storage spaces, with potential public viewing and access, as well as service spaces and the second floor connection to the Herold Wing. This connection also facilitates service to the Crocker Art Gallery Ballroom for events and catered functions.

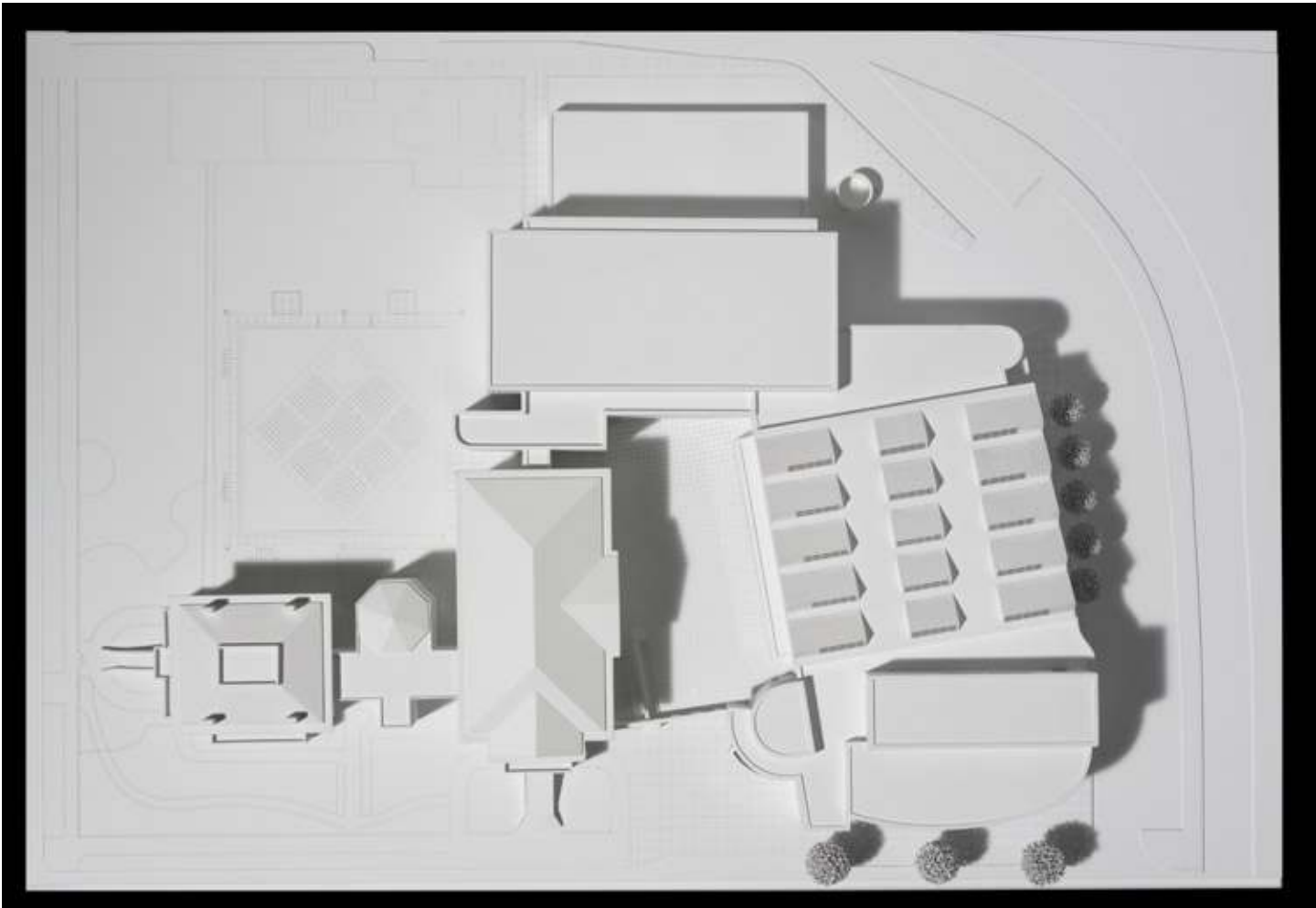
The third floor is occupied by the new suite of temporary and changing exhibition galleries that afford maximum flexibility and installation variation. The new galleries are directly connected to the existing Art Gallery building, allowing for a continuous circulation sequence from the new to the existing, both vertically and horizontally, thus totally integrating the entire complex.



Existing conditions



Existing conditions



Site plan

# THE CROCKER ART MUSEUM

Addition and Renovation



*O Street elevation*



*North elevation*



*Corner of 2nd and O Street*



*West elevation*

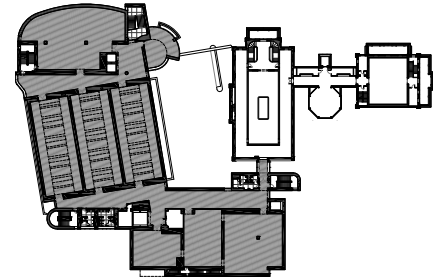
# THE CROCKER ART MUSEUM

Addition and Renovation

## Key Project Information

- New courtyard
- Lobby
- Reception and dining areas
- Double-height reception space
- Museum store
- Cafe
- Public meeting rooms
- 350-seat auditorium
- Loading dock and service support spaces

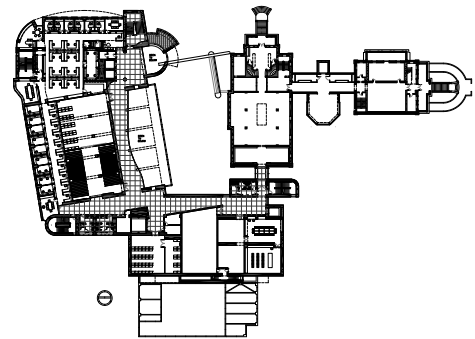
- completion: 2010
- gsf: 145,000



Third level plan



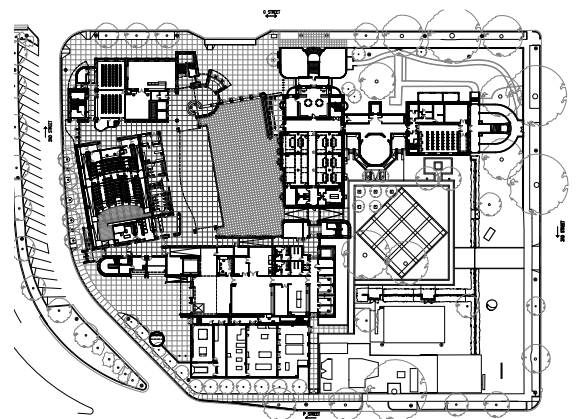
Typical third floor gallery



Second level plan



Aerial view of construction in progress



Ground level plan