

**ASTOR PLACE**

Residential Condominium & Retail



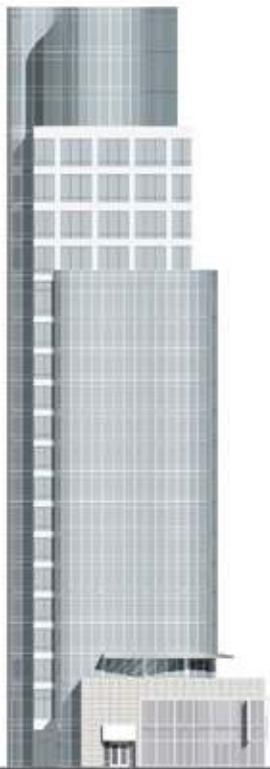
*Southeast corner*



*West façade*



*Building in context, looking north*



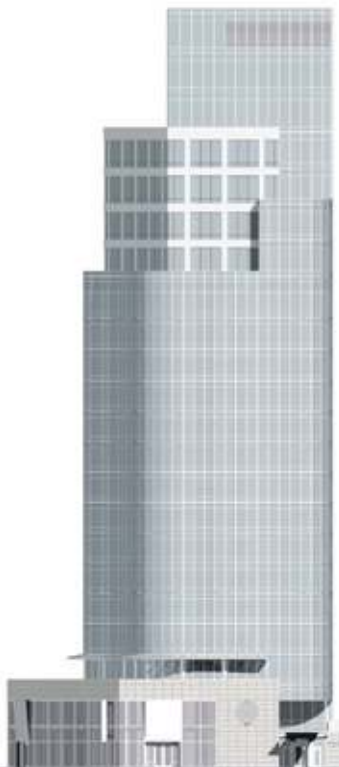
East Elevation



Lobby



Penthouse



West Elevation



Master bathroom

## ASTOR PLACE

Residential Condominium & Retail  
New York, New York



1

The Astor Place Tower is a 21-story mixed use commercial and residential condominium containing 13,000 square feet of retail space and 39 luxury residential loft units. The project site is located on one of New York City's primary urban squares at the intersection of Lafayette Street, Astor Place and Fourth Avenue.

The building's asymmetrical form was conceived as a freestanding, three-dimensional object, an obelisk, placed within the existing space, establishing a sense of place. At ground level, the base of the tower responds to the urban framework maintaining a pedestrian street wall.

The dynamic, curvilinear shape and glass façade provide a strong contrast to the rectilinear masonry buildings that surround it. The building intentionally creates the effect of a kaleidoscope, mirroring fractional and fragmented images of neighboring structures day and night. Perceptions of both the play of light and the building's form vary depending upon the vantage point.

At the rear of the site, the 4,500-square foot public plaza, facing Cooper Square, provides a spatial extension to the square. Its furnishings include benches, chairs and tables with inlaid chess boards. An adjoining raised, tree planted landscaped buffer, provides a physical separation from the residential entry on Lafayette Street.

## ASTOR PLACE

Residential Condominium & Retail

### Key Project Information

- project site located on one of New York City's primary urban squares
- 39 luxury residential units
- 100,000+ square feet residential space
- 13,000 square feet retail space
- 4,500-square foot public plaza
  
- completion: 2006
- gsf: 140,000

### Developer

The Related Companies



Site plan

