

## Princeton University

Whig Hall  
Princeton, New Jersey



At the heart of Princeton's campus lies Canon Green, bounded on the south by a pair of identical neoclassical structures built to house the University's two debating societies, Whig and Clio. When all but the exterior wall of Whig were destroyed by fire, the University took the rebuilding program as an opportunity to strengthen ties of its formal center to current student use.

In its rebuilding program were facilities not only for the debating society but also for activities more central to a broader spectrum of students, most importantly the office of the student president, a large meeting room, an information center, a lounge, and conference, seminar and work rooms. Some 10,000 square feet of program were to be built into a structure that had previously held 7,000.

Further, new construction had to be built to current building—particularly fire-proofing—codes and be fitted with a modern air conditioning system. The new facility is independent structurally and aesthetically from the shell of the original building within which it sits. To avoid overburdening old walls and foundations, new full height columns were lowered on to newly created foundations within the old building's perimeter. By removing the east wall, the structure and the activity held within is visible to and from students along the busy cross campus path to the east.

# Princeton University

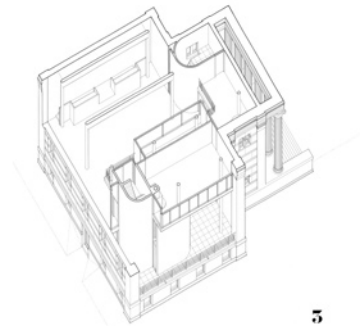
Whig Hall

## Key Project Information

- multi-use meeting/reception space with flexible seating for 250
  - information center
  - conference, seminar and work rooms
  - lounge
  - projection facilities
  - terrace
  - renovation of and addition to an Ivy League landmark
- 
- completion 1975
  - gsf 10,000

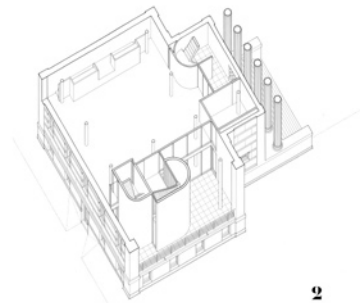
1976 National Honor Award, American Institute of Architects

1973 Design Award, Progressive Architecture



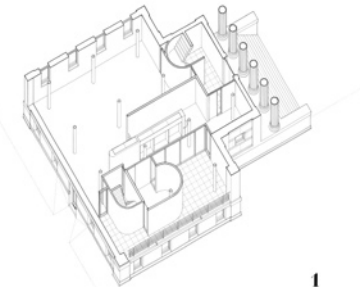
Third level axonometric

5



Second level axonometric

2



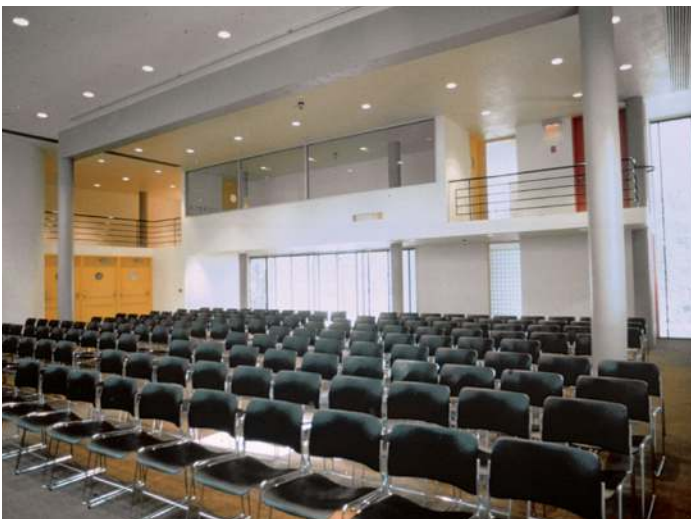
First level axonometric

1



Grand level axonometric

G



Multi-use space and projection room