

Dartmouth College

John W. Berry Sports Center
Hanover, New Hampshire



1



2



3

This new athletic facilities building is located within a traditional brick and stone Ivy League Campus, adjacent to athletic fields, tennis courts and residential streets. It is linked to the historic Alumni Gymnasium, which was also renovated.

The ground floor of the new facility houses a 2,200-seat, intercollegiate basketball arena that is reconfigurable as three regulation basketball courts, a physical fitness center and classroom, varsity locker rooms, athletic ticket offices and a concession area.

The second floor, reached by two stairs and a bridge from the renovated Alumni Gymnasium, houses seven competition squash courts, six racquetball courts, a dance studio and bleacher balconies for spectators. The facilities are accessed from a barrel-vaulted, skylighted gallery, culminating in a bay window overlooking the entry.

Horizontal and vertical circulation elements wrap the three sides of the basketball arena, allowing natural light into the fitness center and dance studio. The choice of exterior materials addresses contextual constraints and articulates internal volumes as well as the layered organization of the plan.

The renovation of the seventy-five-year-old Alumni Gymnasium included the pool, gymnasium, running tracks, crew rowing tanks, lockers and staff offices.

1 *Aerial view of model*

2 *View of public entry façade with gallery bay window above*

3 *Spectator gallery with bridge beyond*



Northwest view of building from lawn



Night view of north façade from tennis courts



Rear elevation

Dartmouth College
John W. Berry Sports Center



Basketball arena



Three-glass-wall exhibition squash court

Dartmouth College

John W. Berry Sports Center

Key Project Information

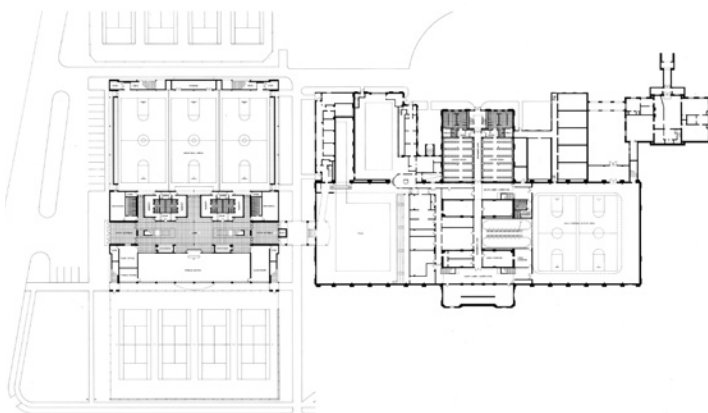
- swimming pool in renovated gymnasium
 - 2,200-seat intercollegiate basketball arena
 - 3 regulation basketball courts
 - fitness center
 - entrance lobby with ticket offices and concession area
 - dance studio
 - 7 competition squash courts
 - racquetball courts
 - spectator bleacher galleries
 - two sets of tennis courts
-
- completion 1987
 - gsf 118,000



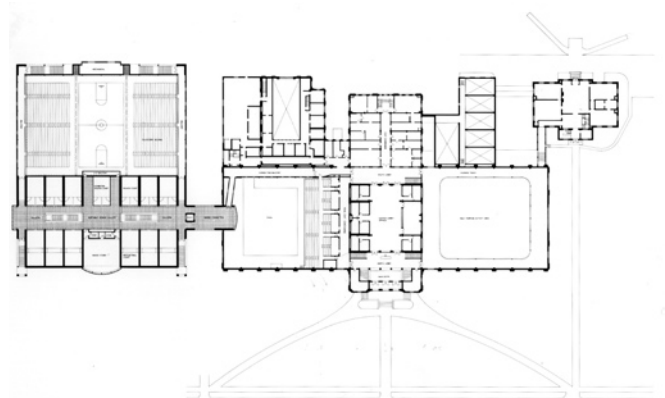
Swimming pool in renovated gymnasium



Dance studio



Ground level



Second level