

Cornell University

Basketball Arena and Fieldhouse
Ithaca, New York



1



2

The building forms the southern edge of Cornell's varsity practice fields. It comprises two major volumes: a basketball arena with three regulation NCAA courts and roll-out seating for 5,000 spectators, and the field-house-cage.

The three basketball courts merge to form a single exhibition court when the two-tiered bleachers are extended. A continuous balcony surrounds the arena at the upper-bleacher level. At one end, an alumni lounge overlooks the court through a bay window; at the other end are coaches' offices. The cage is a large, naturally lit multipurpose sports practice space that includes a climbing wall for teaching and training.

The lobby is the organizational fulcrum of the building, linking the office-service areas with the main athletic spaces and providing an interconnecting public entrance to the hockey rink.

Whereas most of Cornell's athletic buildings are fieldstone with limestone trim, this building is constructed of groundface concrete block, white porcelain enamel panels, and precast concrete.

Unlike the traditional campus model, this architecture clearly articulates the interior volumes that define the spatial and organizational hierarchy.

1 Southwest façade

2 North façade from practice fields



Entry arcade



Lobby and public stairs



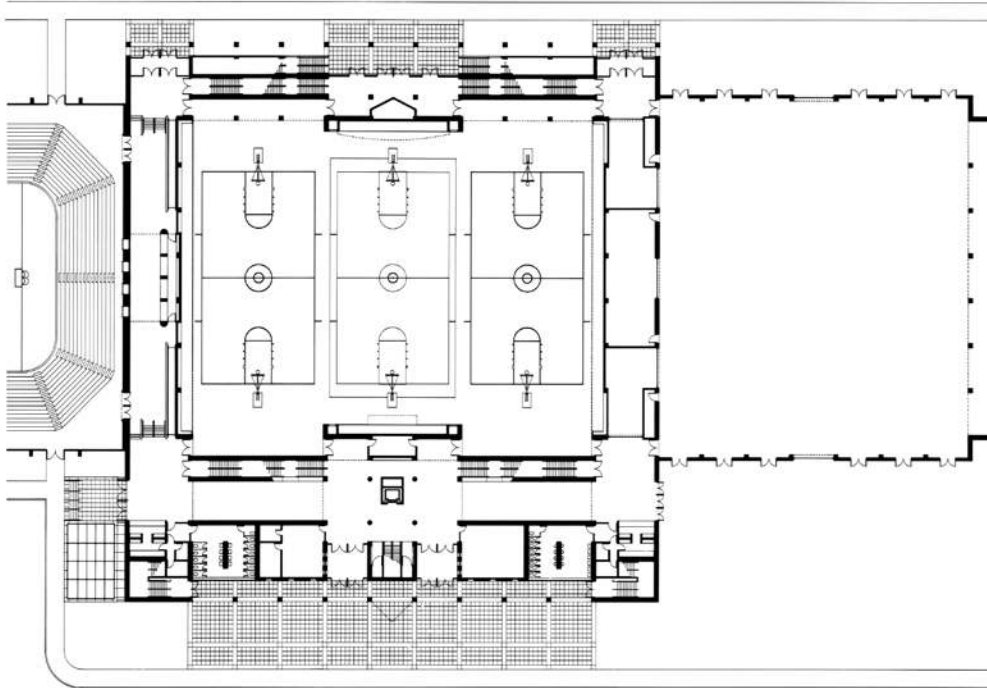
North façade from practice fields

Cornell University

Basketball Arena and Fieldhouse



Basketball arena



Entry level

Cornell University

Basketball Arena and Fieldhouse

Key Project Information

- swimming pool in renovated gymnasium
 - 5,000-seat spectator arena
 - 3 regulation NCAA basketball courts
 - multipurpose training cage with climbing wall
 - weight training/equipment rooms
 - indoor tennis courts and natatorium
 - expansion planned to the east
-
- completion 1990
 - gsf 180,000
 - construction cost \$14,000,000



Competition basketball court showing coaches' offices and balcony



Fieldhouse and climbing wall