

**The Capital Group, Inc.**

Los Angeles, California



1



2



3

The team-oriented approach of the Capital Group, a mutual equity fund management concern, is reflected in the egalitarian, non-hierarchical environment of the company's West Los Angeles offices. At the client's request, there are no corner offices. Instead, a boardroom, conference rooms, library, and staff lounge occupy the corners of the two 16,000-square-foot floor plates, and individual offices and group workstations are arranged around the perimeter.

The clients were intensely involved in the design of the prototypical office of the future, which needs to accommodate a wide spectrum of knowledge-based employees: portfolio managers, research analysts and assistants, and legal, statistical and investment support personnel.

Rather than the usual desk/credenza arrangement, each office has a 3'-6" conference table that encourages the discussions so characteristic of the company's approach

to investing, as well as a U-shaped counter providing a generous horizontal work surface for an evolving assortment of office machines.

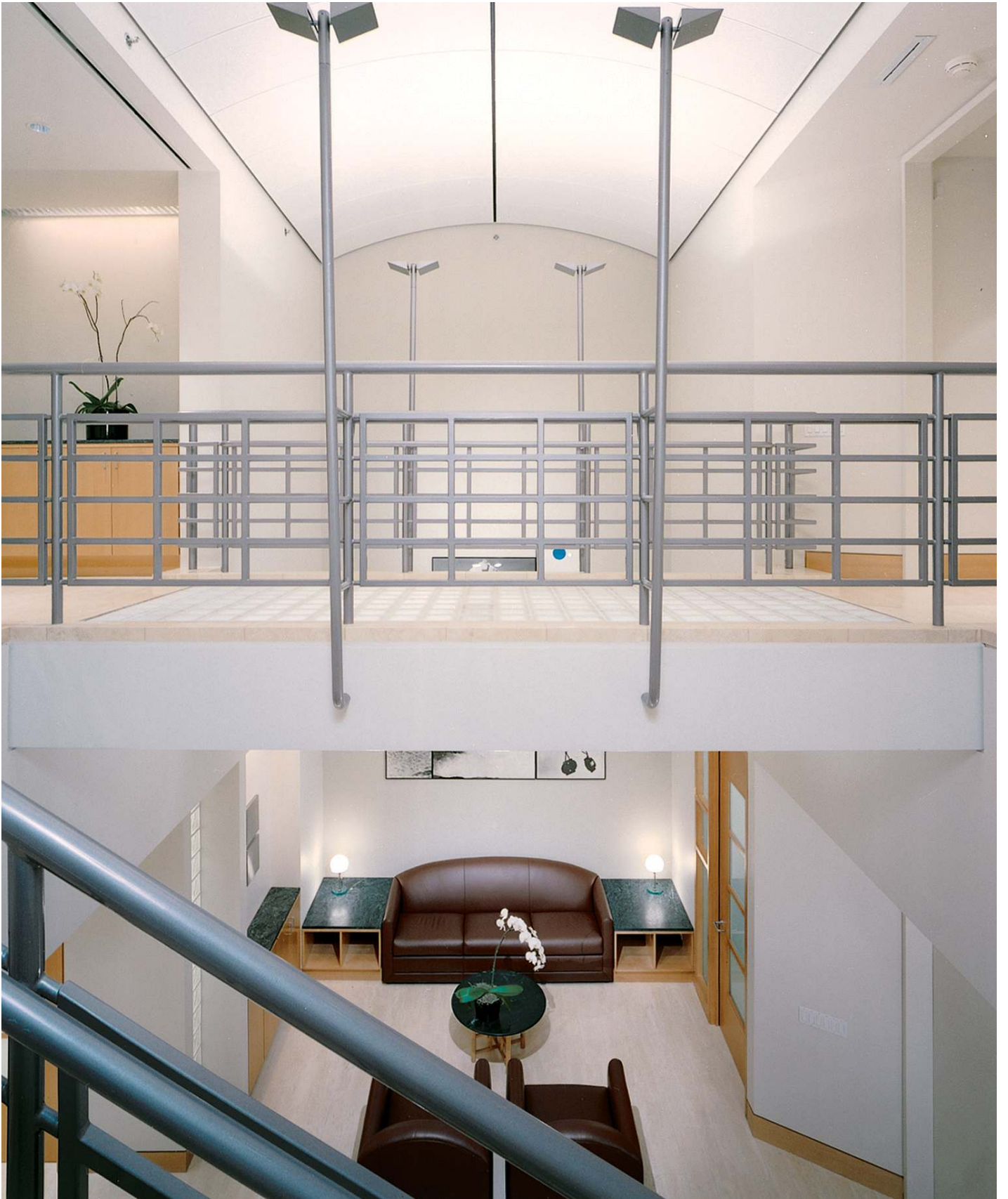
Maple panels, translucent glass and transparent glass are layered in corridor walls, creating an instant reading of private and public spaces and allowing work stations arranged around the core to borrow light from the offices. The perimeter offices combine natural light with incandescent and fluorescent illumination from individually controlled luminaires. The HVAC system in each office can be individually manipulated. Special acoustical treatments, such as recessed doorways lined with perforated vinyl to reduce noise transmission, were required to accommodate the company's "open door" philosophy.

An open stair links a two-story entry and reception space to a glass-block bridge, which in turn connects with circulation galleries displaying contemporary art.

1 Conference room waiting-reception area

2 Typical associates' office

3 Typical secretary workstation



Reception area and circulation bridge



Boardroom

## The Capital Group, Inc.

### Key Project Information

- double-height entry/reception area
  - library
  - circulation galleries for contemporary art
  - conference rooms
  - large boardroom
  - staff lounge
  - flexible, reconfigurable work modules
  - design reflects the client's non-hierarchical management philosophy
- 
- completed 1993
  - gsf 32,000



*Typical bullpen workstations*