

The David Geffen Foundation Building

Beverly Hills, California



1



2



3

This 90,000 square-foot office building is located in the Beverly Hills industrial district, where zoning restrictions limit the height of buildings to three stories. The typical cornice line along the street is reinterpreted by a barrel-vaulted, Kal-wall roof running the length of the building and incorporating the third-floor offices.

Site and program variants are exploited to create a complex, hierarchically asymmetrical building. The theater marks the garage entry and ramp; the main conference rooms occupy a tower at the corner, adjoining a plaza and reflecting pool; and the main entry circulation space projects from the long facade as a cylindrical gallery

rotunda. The three-story limestone rotunda with exposed stairs, curving balconies, elevator core, reversed-cone ceiling, and clerestory windows is the central volume in the composition.

The primary rectilinear mass is clad with a combination of smooth gray limestone and textured green granite in contrast to the zinc panels of the screening room, conference tower and elevator core. The industrial steel window system has a powder-coated finish and is glazed with blue green tinted and ceramic frit glass. Entrance railings and miscellaneous trim are in stainless steel.

1 Conference tower

2 Ground level arcade

3 Building entry



Exterior view from southwest with entrance to underground parking garage



View of conference tower

The David Geffen Foundation Building



Interior view of translucent barrel-vault



Detail of atrium



View of main entrance and arcaded ramp

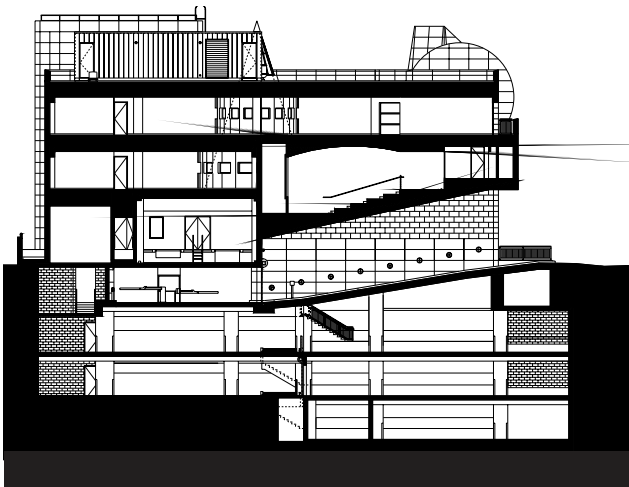


Atrium and reception desk entry

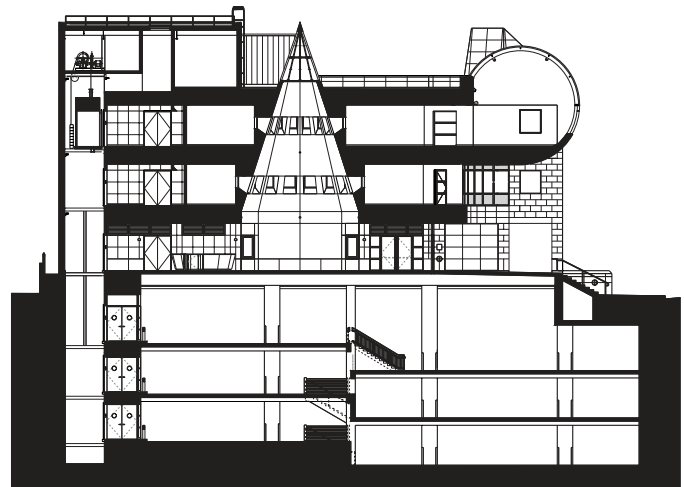
The David Geffen Foundation Building

Key Project Information

- three-story office building
 - barrel-vaulted roof of translucent panels
 - screening room
 - tower conference rooms
 - underground parking for 275 cars
 - three-story, cone-shaped, central atrium
 - outdoor plaza and reflecting pool
-
- completion 2000
 - gsf 90,000



Section at screening room



Section at atrium