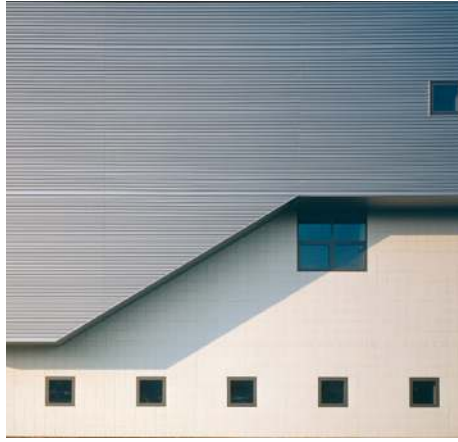


## Lawrence Technological University

University Technology and Learning Complex  
Southfield, Michigan



1



2



3

The University Technology and Learning Complex, the largest academic building the University has ever constructed, provides state-of-the-art learning facilities and a dramatic new monumental "front door" for the 115-acre campus. The new building serves all of LTU's programs in technology, communications, management, design and the fine arts.

The complex offers comprehensive facilities for learning in an electronic environment with fully wired classrooms, a virtual reality lab, an advanced graphic lab, a lighting lab, electrical engineering and computer labs, a photography studio, and TV production and broadcasting studios with double-height ceilings. It also offers galleries and lecture rooms, an office of the future, a resource center with a 15,000-volume library, conference rooms and office spaces.

The ground floor lobby announces the building's focus on technology with an information commons featuring computer stations available for campus information, group teaching and individual research.

The four-story, 82,500-square-foot building extends between the one-story Architecture

and Engineering Buildings, its length interrupted by a grand three-story portal that acts as the school's formal entrance and leads to the campus quadrangle. White ceramic tile has been used to clad the facade's base, with silver metallic painted ribbed steel panels used for siding. Zinc shingles were selected to clad the special facilities that extend from the exterior walls as rectangular objects.

The initial analysis of the building site also resulted in a complete reconsideration of the campus plan. Formerly, the main road to the campus continued through the middle of the central campus quadrangle, impeding pedestrian flow among the main academic buildings.

With the introduction of the Technology and Learning Complex, the road now circles the campus perimeter, and the parking lot previously on the site has been relocated to an edge of the campus. The result is a pedestrian quadrangle, with the Technology and Learning Complex completing its architectural frame. A new landscape plan features tree-lined paths connecting the buildings that border the quadrangle.

1 View of gallery entry from quadrangle

2 Detail of south façade

3 View of main entry below offices



*Quadrangle façade*



*Night view of auditorium*



**Lawrence Technological University**  
University Technology and Learning Complex



*Exhibition gallery*



*Studio*



*Lecture theater*

## Lawrence Technological University

University Technology and Learning Complex

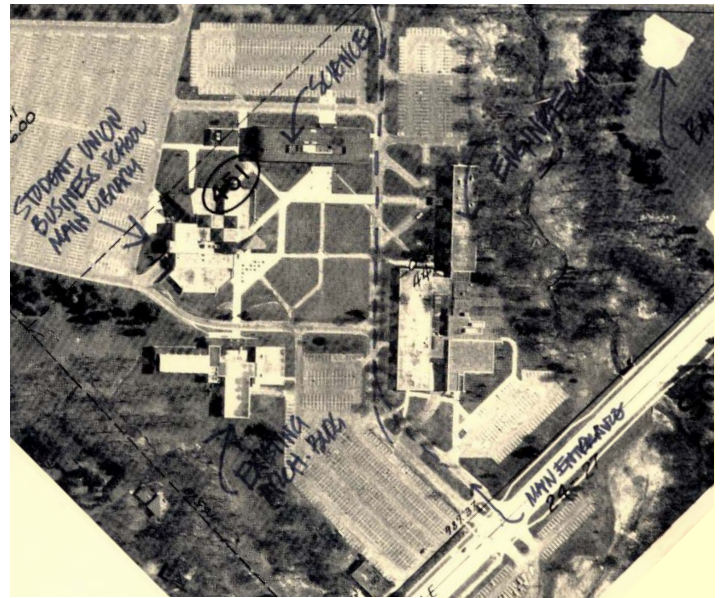
### Key Project Information

- campus entry building with a three-story formal gateway
- lobby information commons
- fully-wired classrooms
- virtual reality lab
- advanced graphics lab
- lighting lab
- electrical engineering and computer labs
- photography studio
- TV production and broadcasting studios for long distance learning
- galleries and lecture rooms
- an office of the future
- resource center with a 15,000-volume library
- conference rooms
- office space
- redesigned campus plan
- traditional pedestrian quadrangle

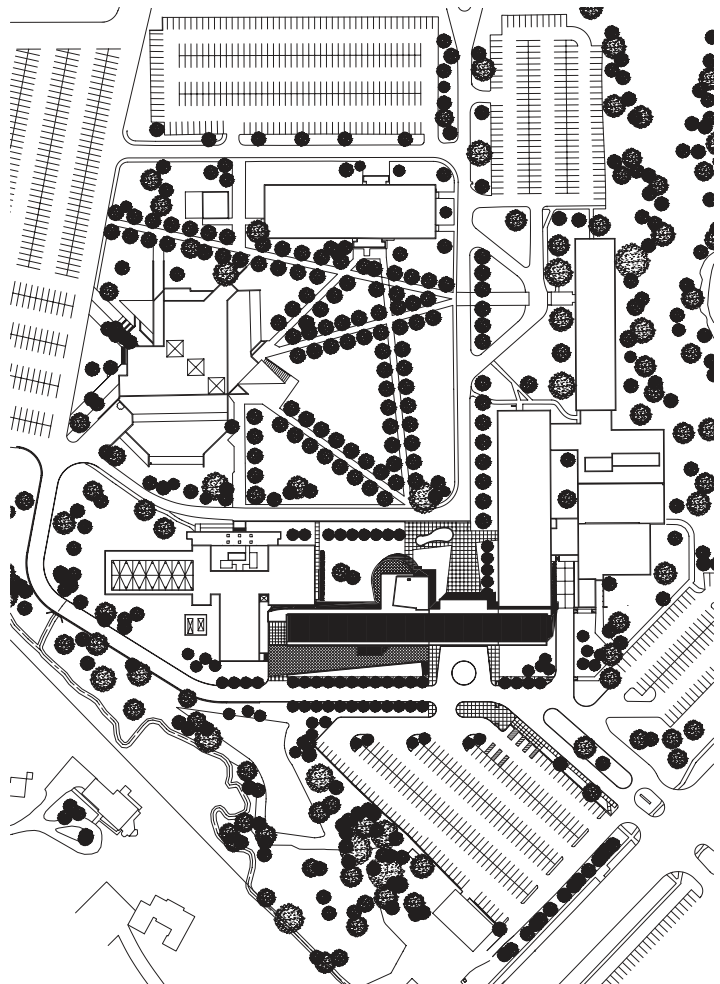
- completion 2000
- gsf 82,500

Associate Architect

Neumann/Smith & Assoc.



Aerial view prior to project



Site plan



Lecture theater lounge