

## Bryant University

George E. Bello Center for Information and Technology  
Smithfield, Rhode Island



1



2



3

At Bryant University, the planning of the new George E. Bello Center for Information and Technology, which includes The Douglas and Judith Krupp Library, resulted in the creation of a new campus quadrangle displacing vehicular drives and parking.

An updated master plan introduced a landscaped academic quadrangle and a new sense of place and identity for the school. In the great tradition of University campus libraries, the Bello Center frames the quadrangle and provides a new focal point for campus life.

The Bello Center's primary spaces are organized within a glass enclosed, double-height pavilion structure, which orients to the new campus quad. In the evening, the center radiates light and provides views into its facilities from the campus.

The library, which occupies a major portion of the building, provides for the introduction of state-of-the-art, electronic information services, classrooms, conference rooms and study rooms that formerly had not been available. It will also accommodate the growth of the library's current collections which includes books, bound journals, audio-visual materials and microfilm.

The other portion of the building is devoted to the entry Grand Hall and other spaces complementary to the library. The two-story rotunda serves as a central campus meeting place, special events venue and exhibition center. The Grand Hall and the library both connect to a cybercafe, library classrooms, group study rooms and a fully equipped Trading Room, all of which remain open to students and offer study spaces and electronic access when the library is closed.

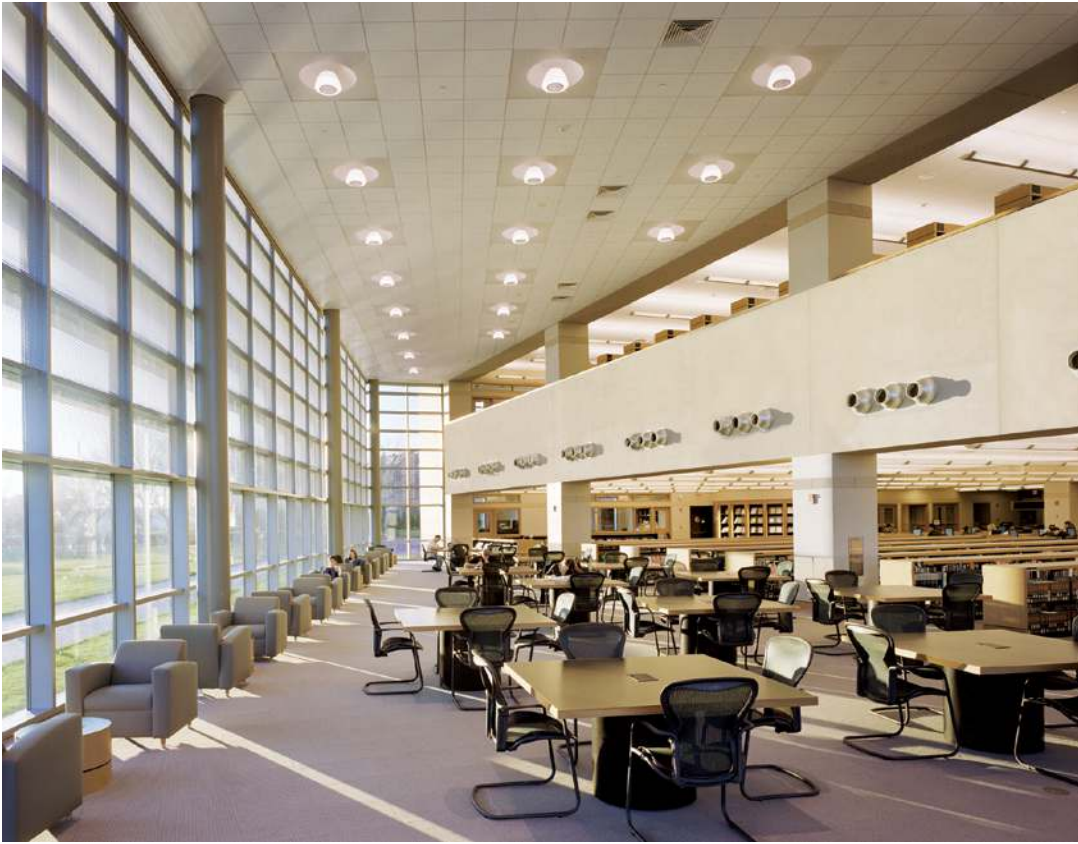
1 East elevation

2 South elevation

3 Detail of Grand Hall rotunda and curtain wall facing South



Grand Hall looking West, toward entry vestibule



Double-height reading room looking West

**Bryant University**

George E. Bello Center for Information and Technology



*The Information Commons looking towards the reading room beyond*



*Double-height reading room looking East*



Computer workstations

**Bryant University**

George E. Bello Center for Information and Technology



*Reference classroom*



*Multi-purpose classroom*

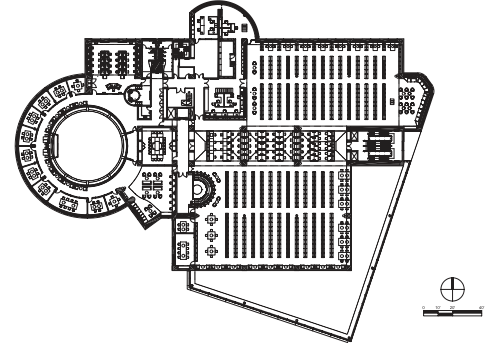
## Bryant University

George E. Bello Center for Information and Technology

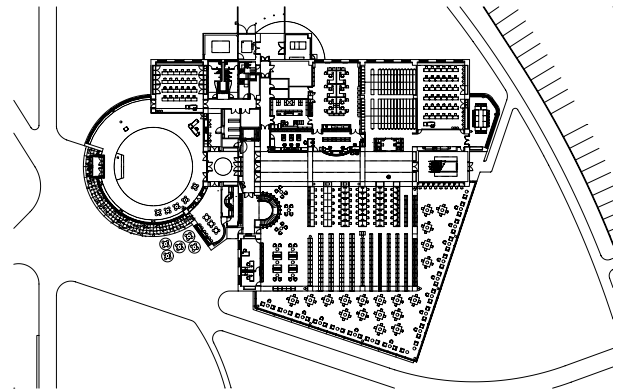
### Key Project Information

- Grand Hall with multi-media display wall
- multipurpose classroom with access to the Grand Hall
- cybercafe
- Information Commons
- state-of-the-art multi-media training facilities and classrooms with computers
- double-height perimeter reading room
- 12 group study rooms
- trading room
- seminar rooms
- 24-hour study areas
- new Campus Quadrangle

- completion 2003
- gsf 72,000



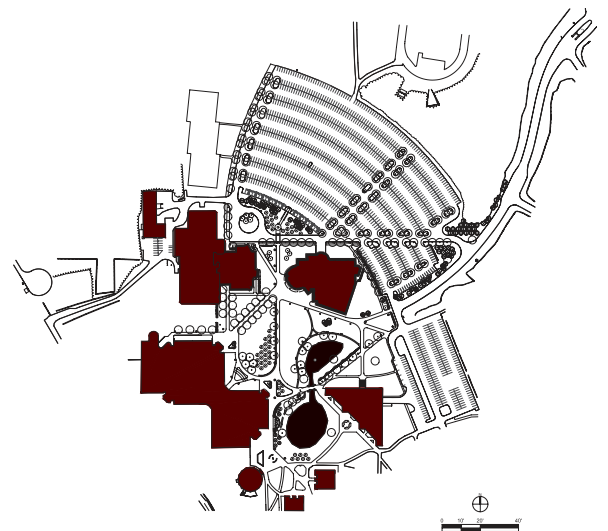
Second level



First level



East elevation looking West



Site plan