

Steel Loft

New York, New York



1

The goal with this apartment was to perceive the "idea" of a single 4,400 square foot rectilinear volume, which is hierarchically modulated and articulated through the layering, horizontally and vertically, of the forms and space. The space, 110 feet long by 40 feet wide, has fourteen (seven pair) of south facing windows on the seventh floor of a loft building in Chelsea.

A line of existing columns, 18 feet from the south façade, articulates the main circulation gallery. A second circulation zone, visual and actual, parallel to and along the south window wall, accesses more private spaces - study, master bedroom suite and master bath - through a sequence of thick wall niches that accommodate sliding steel and patterned glass doors for privacy.

The ceiling height to the underside of the slab is 9'10" Existing beams form a second ceiling layer and are the primary referential horizontal graphic

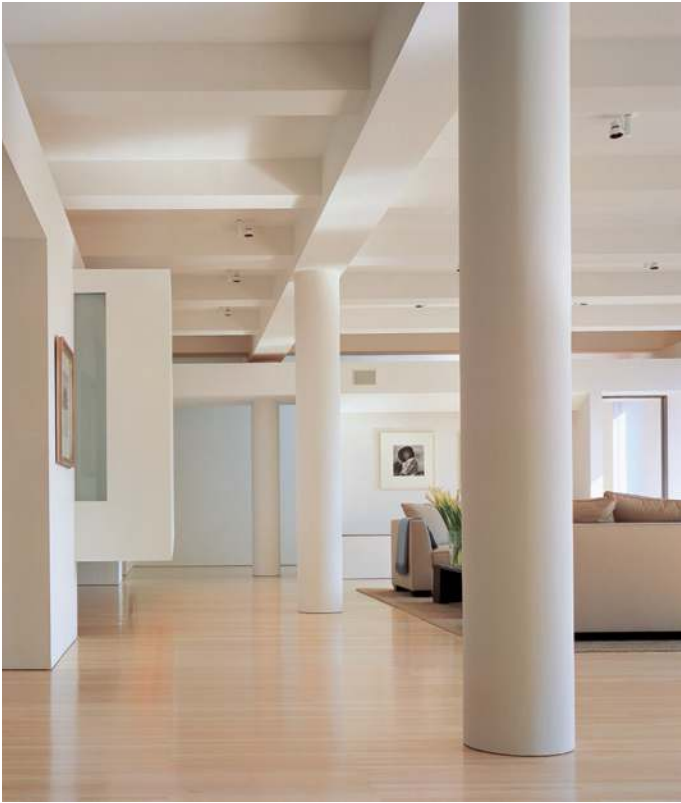
through the entire space. Three ceiling/wall heights below the beams establish datums for primary and secondary walls, which do not engage the ceiling, but float below exaggerating the illusion of a higher space. These varying ceiling heights afford opportunities to conceal ambient indirect lighting, as well as air-conditioning ducts and grilles, and preserve the overall spatial continuity.

The loft is a three-dimensional reinterpretation of a Mondrian; it is an architecture that is at once articulate, graphic, sublime, and calm. It is a space conceived as an "excavation," a carving away that results in an essentialness that is inherently sculptural - light filled, dense and sequential, where nothing is added or redundant.

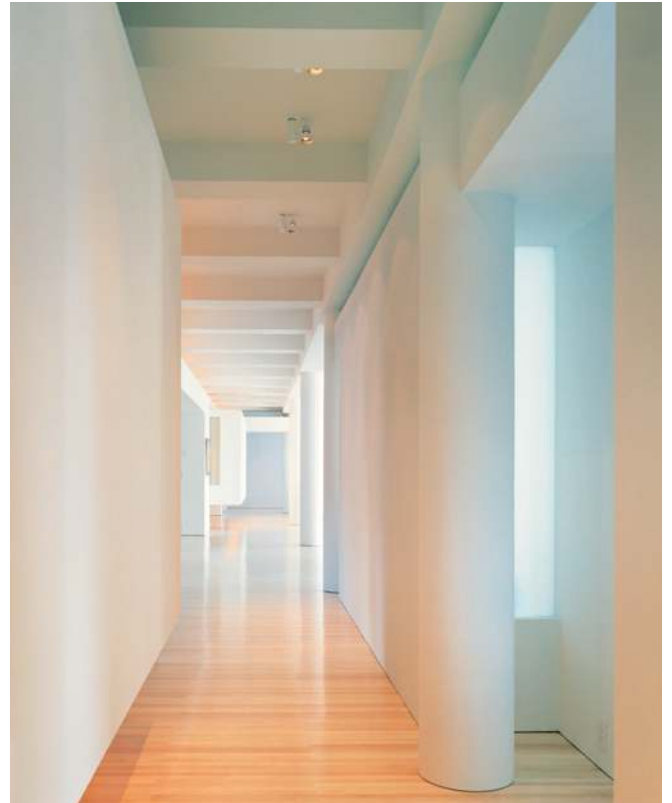


Circulation gallery

Steel Loft



Gallery/living



Detail of gallery



Master bedroom

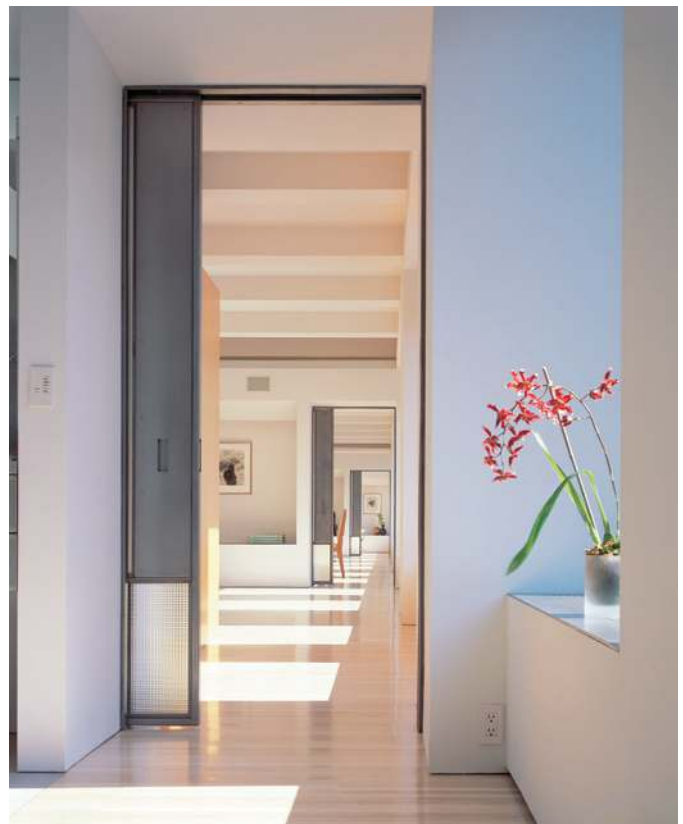
Steel Loft

Key Project Information

- gut renovation of 7th floor loft
 - columned central hallway leads to open living/dining area
 - cantilevered walls and partitions define loft's rooms
 - niches carved into walls create spaces to display art
 - windowed-lined alley parallel to the central hallway provides access to the more intimate spaces like the master bedroom suite and study
 - loft palette features five materials; maple flooring, anigre wood cabinetry, Spanish limestone, powder-coated steel and stainless steel, within its all white walls and neutral furnishings
-
- completion 2002
 - gsf 5,000



Entry



Gallery/living