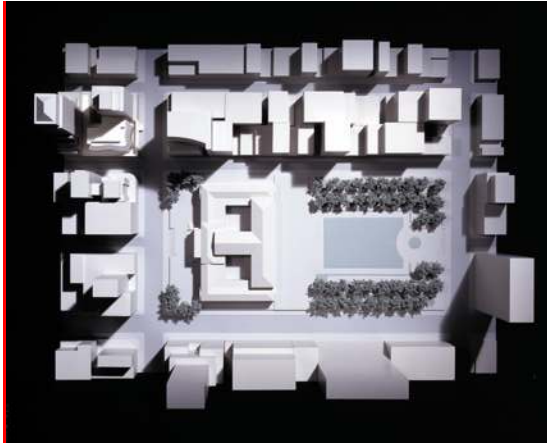


## The New York Public Library

Mid-Manhattan Library  
Renovation and Expansion Project  
New York, New York



1



2



3

The Mid-Manhattan Library is the main circulating library in the New York Public Library system, currently serving 4,000 New Yorkers daily, with 40% coming from boroughs other than Manhattan. Presently, this facility is severely overcrowded, congested, and unable to fully meet the needs of New Yorkers for library information resources, particularly through information technology.

The proposed \$120 million renovation and expansion project of the Mid-Manhattan Library will better meet the daily information needs of 8,000 New Yorkers on-site and thousands more electronically, creating a powerful catalyst for educational opportunity and economic growth.

The current Mid-Manhattan Library occupies a prime location on Fifth Avenue and 40th Street in the former Arnold Constable building which is owned by The New York Public Library. The expansion will add an additional eight floors and 117,000 square feet for library service to the existing 139,000 square foot building, while creating a 20,000 square foot ground floor presence for rental to a prominent retailer.

The Library is proposing a public-private partnership to fund the project, combining private fund-raising, revenue from the retail location, and support from the City of New York.

The design maintains the existing building, with structural modifications, retaining the

contextual/urban reference, while re-imaging the limestone frame as a base and screen for a new, iconic intervention. Using the existing side facades of adjacent taller buildings on both Fifth Avenue and Fortieth Street, the addition acts as a counterpart to the original building; an articulate, glass sheathed, sculptural crystal volume that anchors the corner and establishes an extended and dynamic "place marker" for the New York Public Library/Bryant Park context.

The creation of a singular and memorable new object, as a counterpoint, embodies the visual and psychological presence of the original Beaux Arts Building with a modern vision: "A Beacon of Knowledge".

The expanded Mid-Manhattan library will offer a massive presence of information technology including over 300 computers, 100 laptops, and broad access to hundreds of electronic databases and technology training programs combining computer literacy and library literacy.

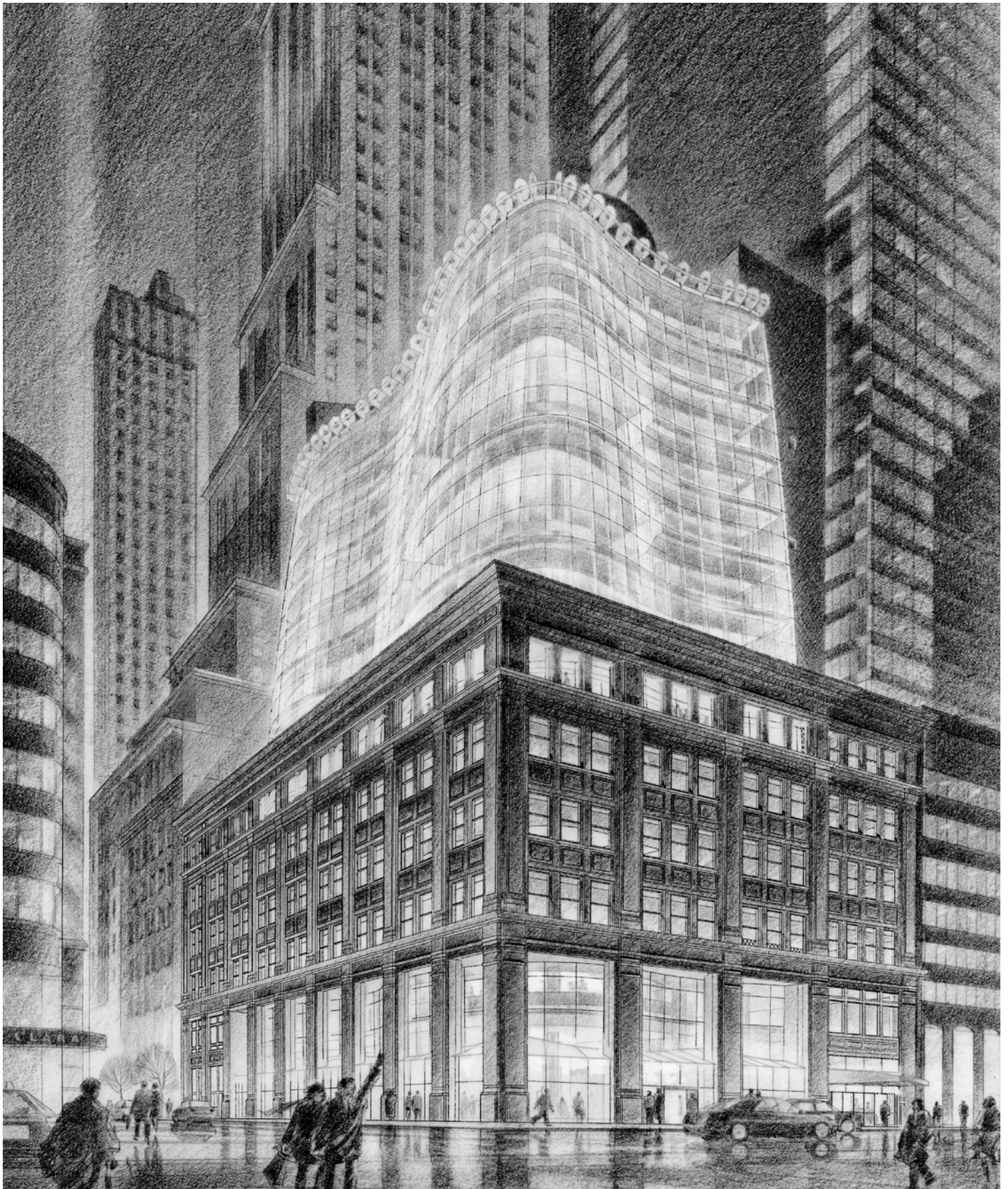
Facilities will include five "Information Commons", one on each of five paired floors: Reference, Art, History and Social Sciences, and Periodicals and an extensive popular library including multiple copies of the latest best-sellers, language books and literature in addition to biographies, mysteries, travel books and vacation guides, books on tape, videos, and current multi-media items.

1 Site model

2 Aerial view from Northwest

3 View from North





View from West

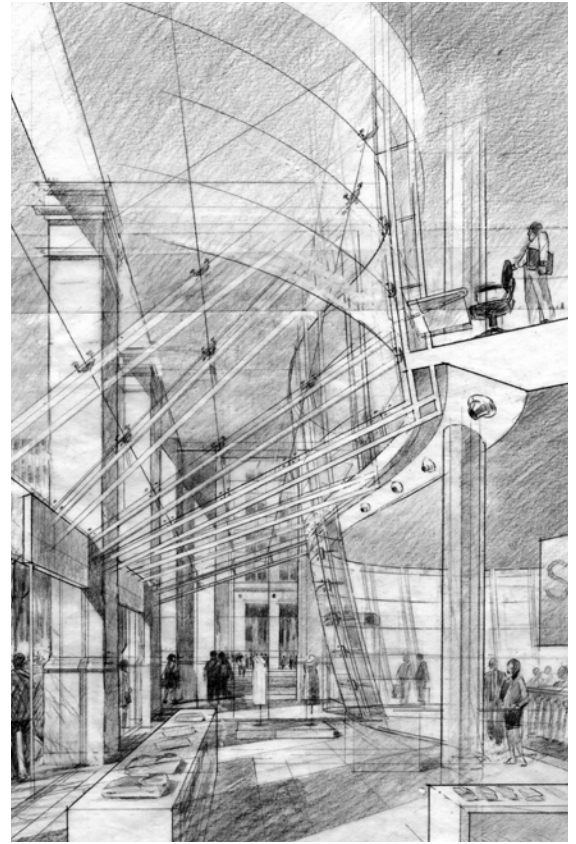


## The New York Public Library

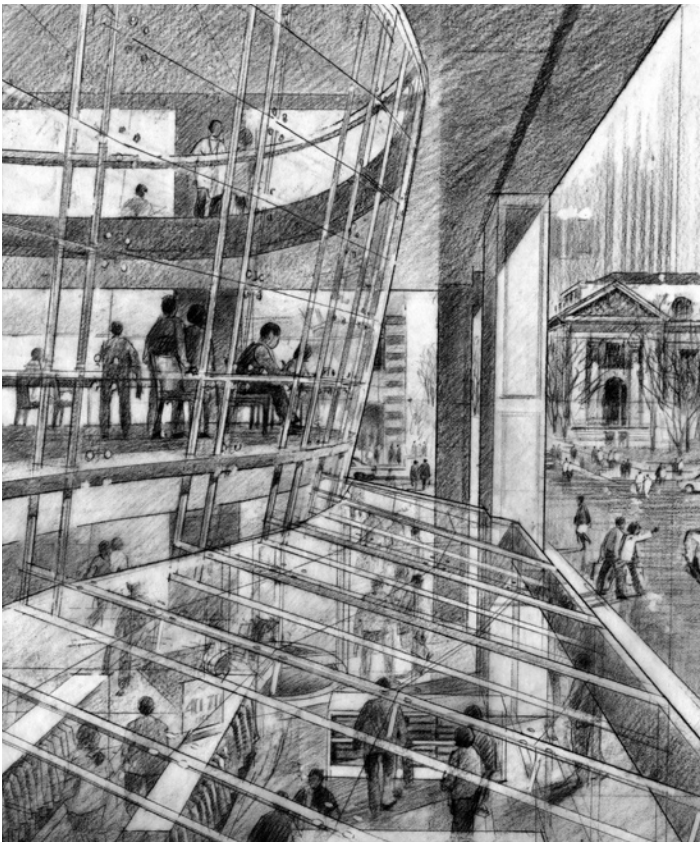
Mid-Manhattan Library  
Renovation and Expansion Project



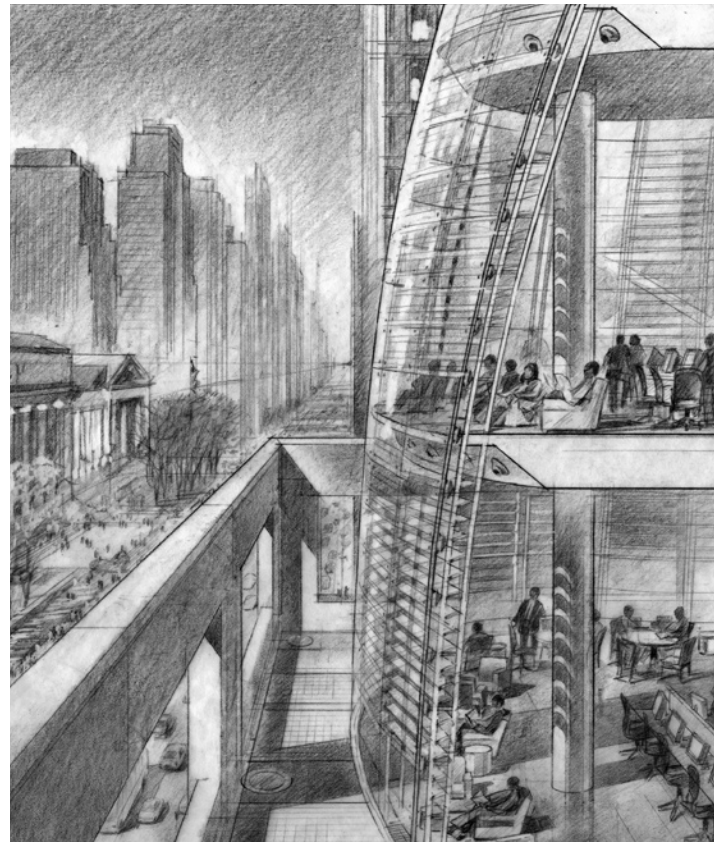
*View of Fifth Avenue retail entry*



*View from Fifth Avenue retail space*



*View from Fortieth Street above retail space*



*Sectional perspective view above Fifth Avenue looking North*

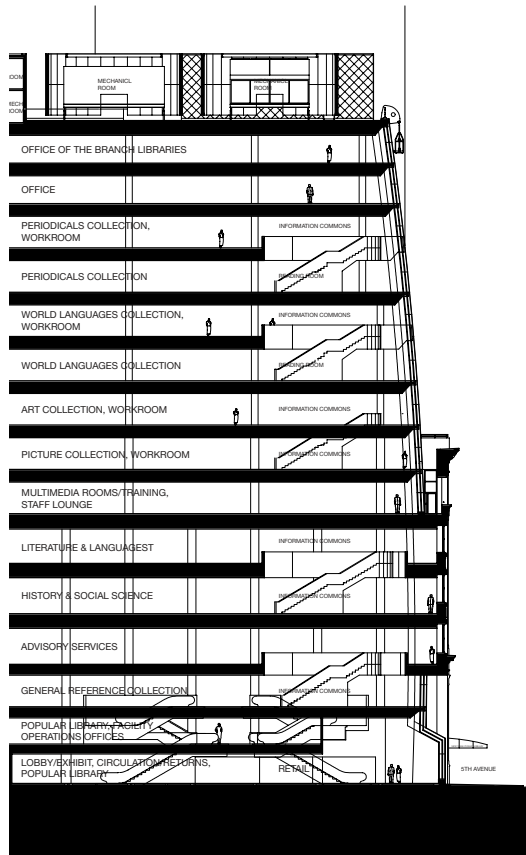
## The New York Public Library

Mid-Manhattan Library  
Renovation and Expansion Project

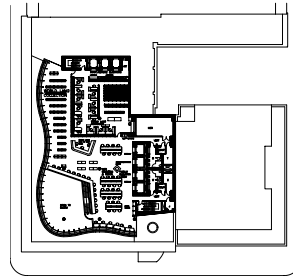
### Key Project Information

- 117,000 square feet added for library service to the existing 139,000 square foot building
- five "Information Commons": Reference, Art, History and Social Sciences, Periodicals, Language and Literature
- state of the art information technology including over 300 computers, 100 laptops
- access to hundreds of electronic databases and technology training programs combining computer literacy and library literacy
- 20,000 square foot ground floor presence for rental

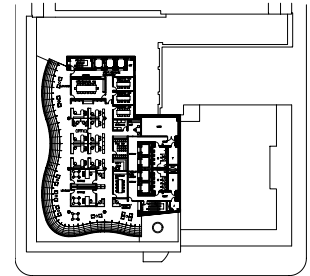
- completion on hold
- gsf 256,000



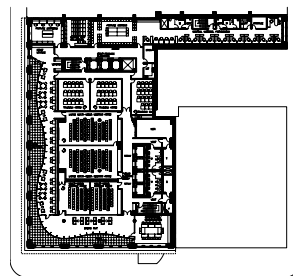
Section



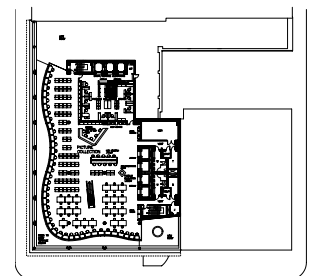
Eleventh level plan



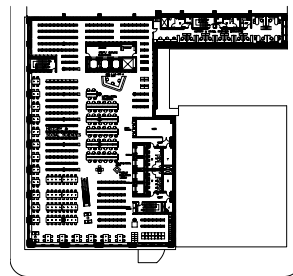
Fourteenth level plan



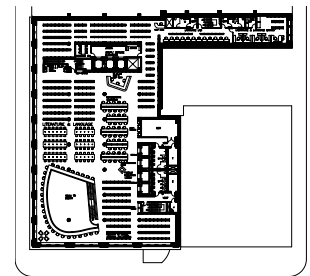
Seventh level plan



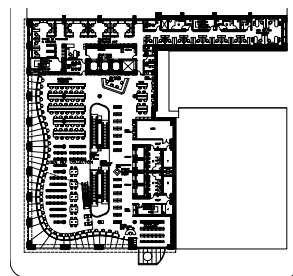
Eighth level plan



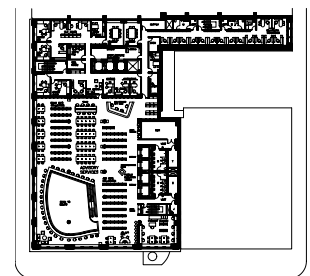
Fifth level plan



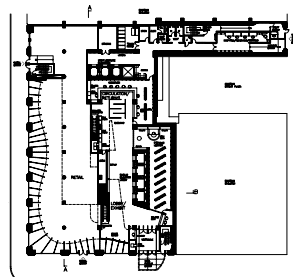
Sixth level plan



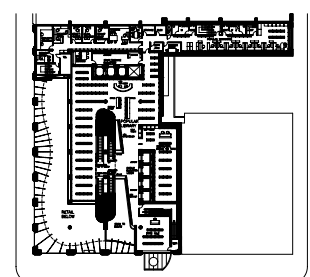
Third level plan



Fourth level plan



First level plan



Second level plan