

The Beverly Hilton

Beverly Hills, California



View from Wilshire Boulevard

The plan for the revitalization of the Beverly Hilton Hotel site embodies the essential elements of 21st century, environmentally responsible, technologically advanced modern architecture and integrated landscape design. At this prominent gateway, extensive site improvements, modifications to the Beverly Hilton, a new Waldorf-Astoria Hotel and two new condominium buildings will create an enriched, iconic and memorable campus.

The redevelopment of the 9-acre property will dramatically increase open space, create lavish gardens, relocate all parking underground and remove unsightly elements, totally transforming the site from one in which concrete prevails to a welcoming, park-like environment. The architectural design will represent California luxury life-style, celebrating the climate and indoor/outdoor living through extensive transparency and connectivity between interior and exterior landscaped spaces. All the new buildings will feature extensive glass areas and open balconies, and will conform to LEED standards.

The existing Beverly Hilton Hotel, designed by Welton Becket and completed in 1955, will be enhanced with a new, celebratory tree-lined entrance. The plan includes upgraded rooms and a new pool area. All of the existing and new hotel roofs will be intensely landscaped, affording views from all floors of planted roof murals. The new Waldorf-Astoria Hotel will mark the intersection of Wilshire and Santa Monica Boulevards. It will be a multi-faceted glass and warm gray limestone clad, articulated structure with a cobblestoned arrival piazza and garden. Fronting the corner will be a new restaurant and a major sculpture, announcing and anchoring the gateway.

The two new condominium buildings are conceived as a pair of coupled, stepped structures. They will be clad in glass and silver gray aluminum panels. Their facades flank the Beverly Hilton Hotel entry drive, reinforcing its renewed presence. Finally, the masterplan greatly improves traffic flow and circulation in and around the site. By literally pulling back the property edges, the plan allows for two new lanes along Wilshire Boulevard and one new lane along Santa Monica Boulevard.



View from Wilshire Boulevard



View from North Whittier Drive

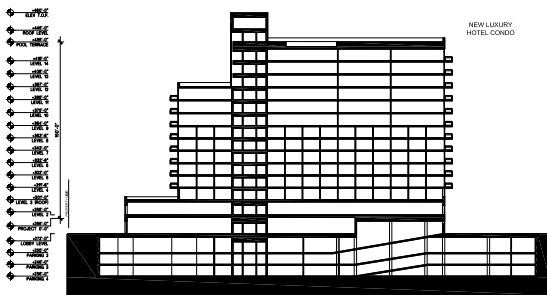
The Beverly Hilton



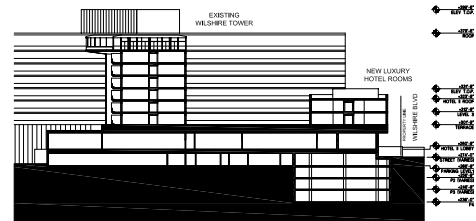
The Beverly Hilton

Key Project Information

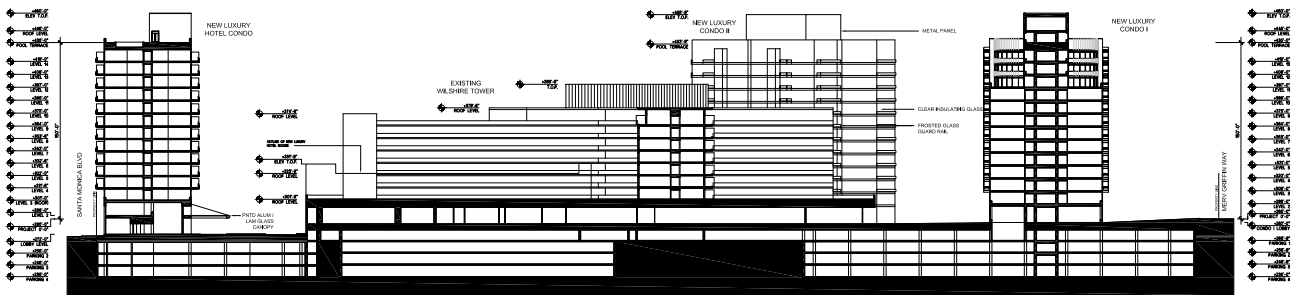
- master plan study to evaluate improvements and site potential of the existing Beverly Hilton hotel
- proposed development of a new 120 room, 5-star hotel and condominium towers
- study includes new underground parking with increased landscaped areas
- new facilities in an open space, campus-like environment



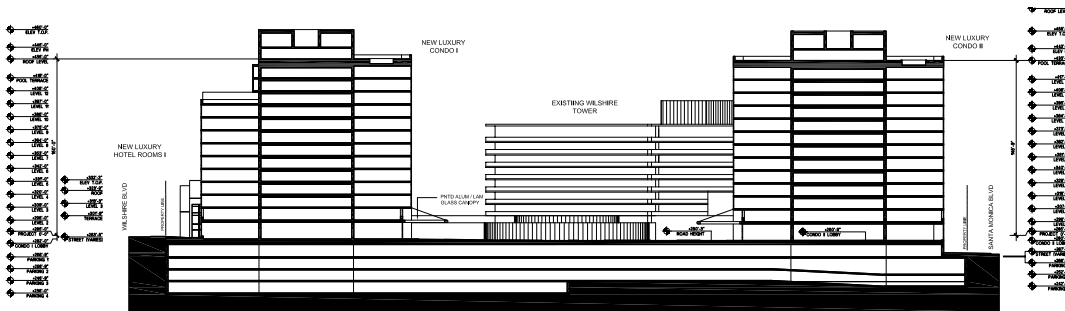
1 SECTION THROUGH HOTEL CONDO
Scale: AS NOTED



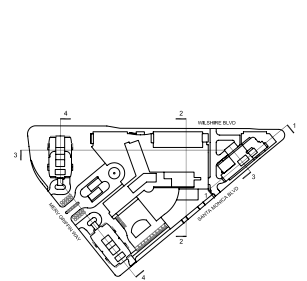
2 SECTION THROUGH EXISTING WILSHIRE TOWER AND NEW LUXURY HOTEL ROOMS
Scale: AS NOTED



3 SECTION THROUGH HOTEL CONDO AND CONDO I
Scale: AS NOTED



4 SECTION THROUGH NEW LUXURY CONDO I AND NEW LUXURY CONDO II
Scale: AS NOTED



5 SECTION KEY PLAN
Scale: 1/4" = 1'-0"