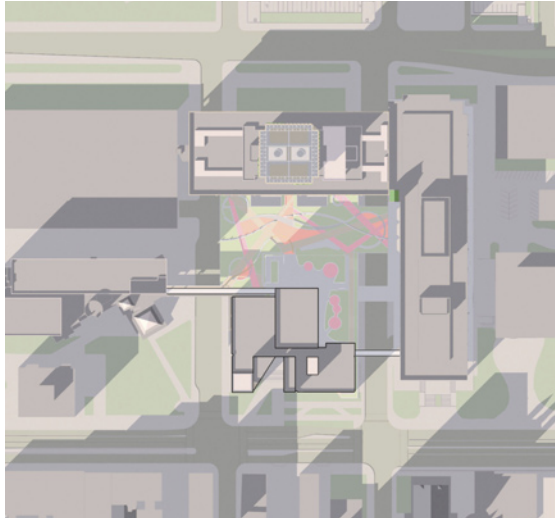


## Cleveland State University

Student Center  
Cleveland, Ohio



1

The new, 138,000 sf student center at Cleveland State University (CSU) will enhance its campus image and create an open connection with the city while offering a wide range of services to students and faculty. Fronting on the main thoroughfare to downtown Cleveland, Euclid Avenue, the center will become the central campus's public gateway and begin the second phase of CSU's master plan to integrate the campus with the bustling avenue and nearby theaters and stores.

Rising on the site of the current administration and student center, the new facility is smaller in both footprint and height than the 1970's building it replaces. The sculptural solution will be an iconic structure that provides for the principal extracurricular and social elements of student life.

The Gwathmey Siegel design locates these spaces - bookstore, dining, lounge, computer access, offices for student activities and conference meeting spaces - on three stories around a central atrium. The Euclid Avenue main entry leads directly into this skylit circulation and activity space which will also connect with campus pedestrian bridges, the main plaza and below grade parking.



2

The building's three levels are organized as follows. Level one provides street level access to the atrium floor, bookstore, pub, and cyber lounge as well as to ramp circulation that leads to a redesigned outdoor plaza.

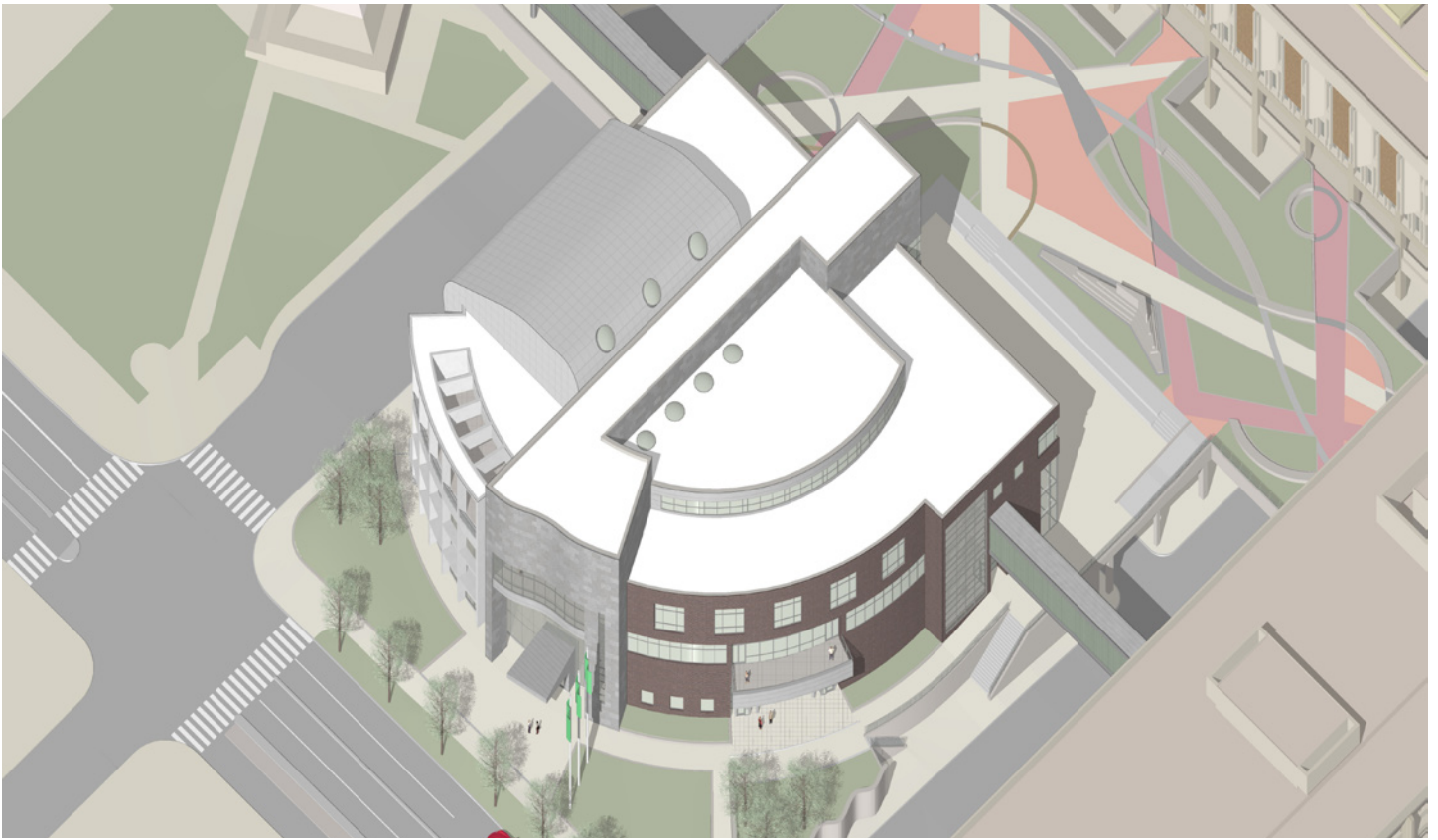
The second level contains the primary dining and food court areas as well as a convenience store and student senate office suite. It also provides direct access to the campus-wide interior walkway system.

On the third level are located a large, flexible conference center; prefunction spaces; and the student life administration and student office suite that includes interconnected lounge and conference rooms. There is also an outdoor terrace fronting Euclid Avenue.

The opening of the building in 2010 will coincide with the completion of the Greater Cleveland Regional Transit Authority's Euclid Corridor Transportation Project. That project, which is being coordinated into the center's entry plaza, reconstructs the Euclid Avenue right-of-way through the CSU campus. It calls for upgrading the sidewalks, lighting, and landscaping and enriching the connection between downtown and the university.

1 Existing site

2 Proposed site



*Axonometric looking southeast*



*View looking northeast*



**Cleveland State University**

Student Center



*View looking southwest from upper plaza*



*Southeast from upper plaza*



West elevation



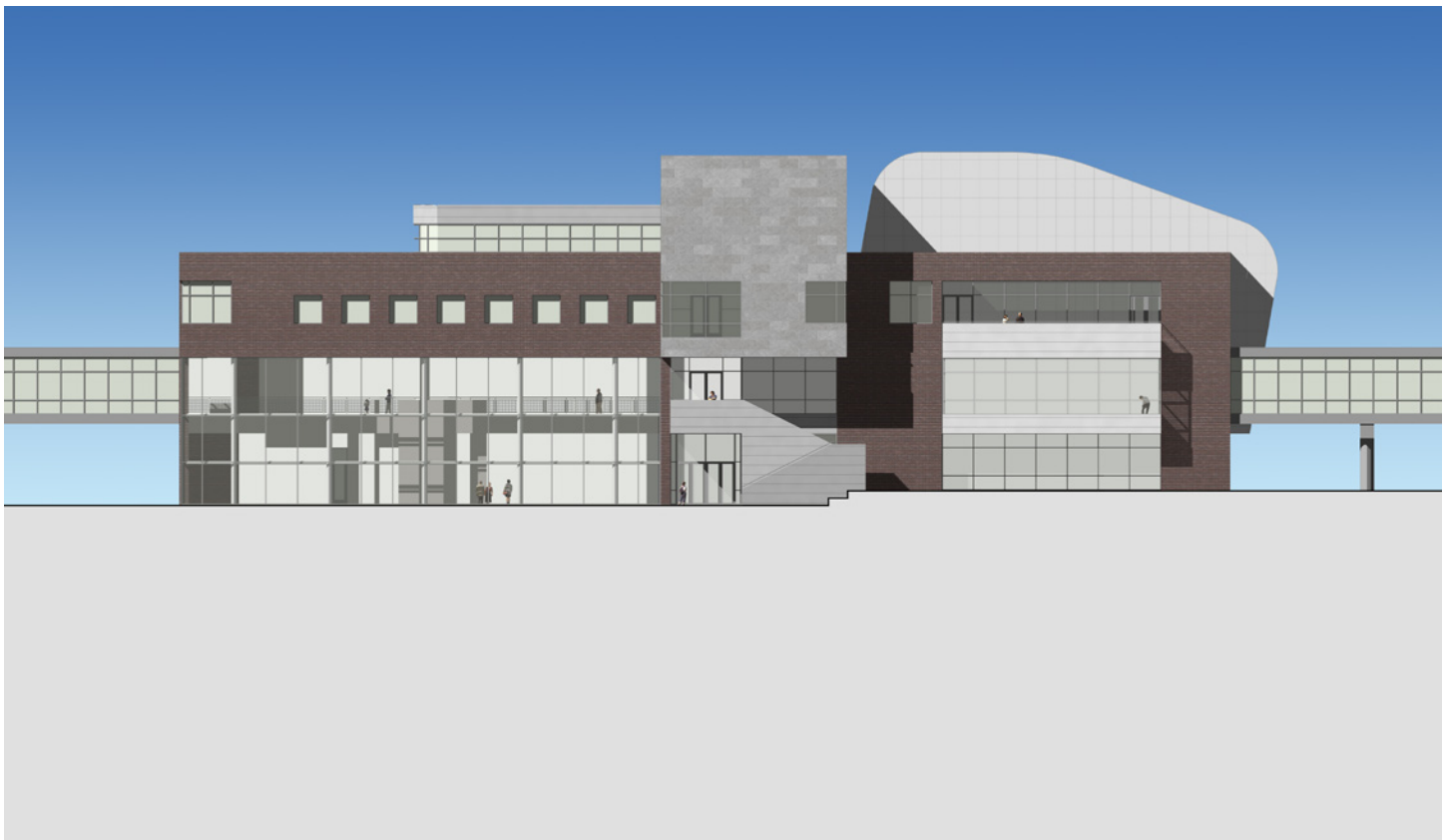
East elevation

**Cleveland State University**

Student Center



*South elevation*



*North elevation*





Interior view



*Interior view*



## Cleveland State University

### Student Center

#### Key Project Information

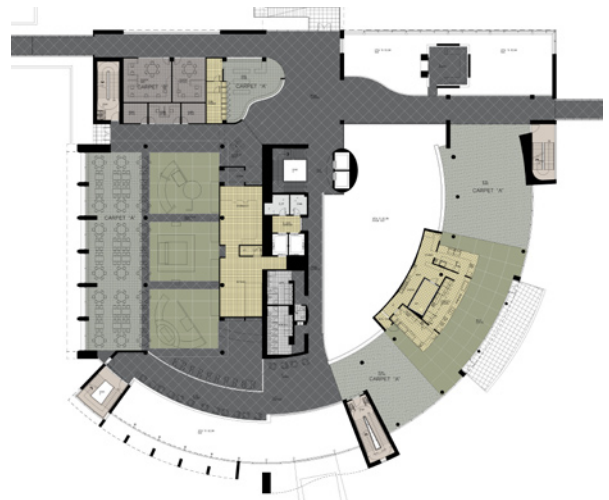
- Three-story skylit central atrium
  - Bookstore
  - Dining and food court
  - Lounge space
  - Computer access
  - Offices for student activities
  - Large divisible conference center
  - Campus interlink
  - Interior walkway system
- 
- completion 2010
  - gsf 138,000



Level 3



Level 1



Level 2