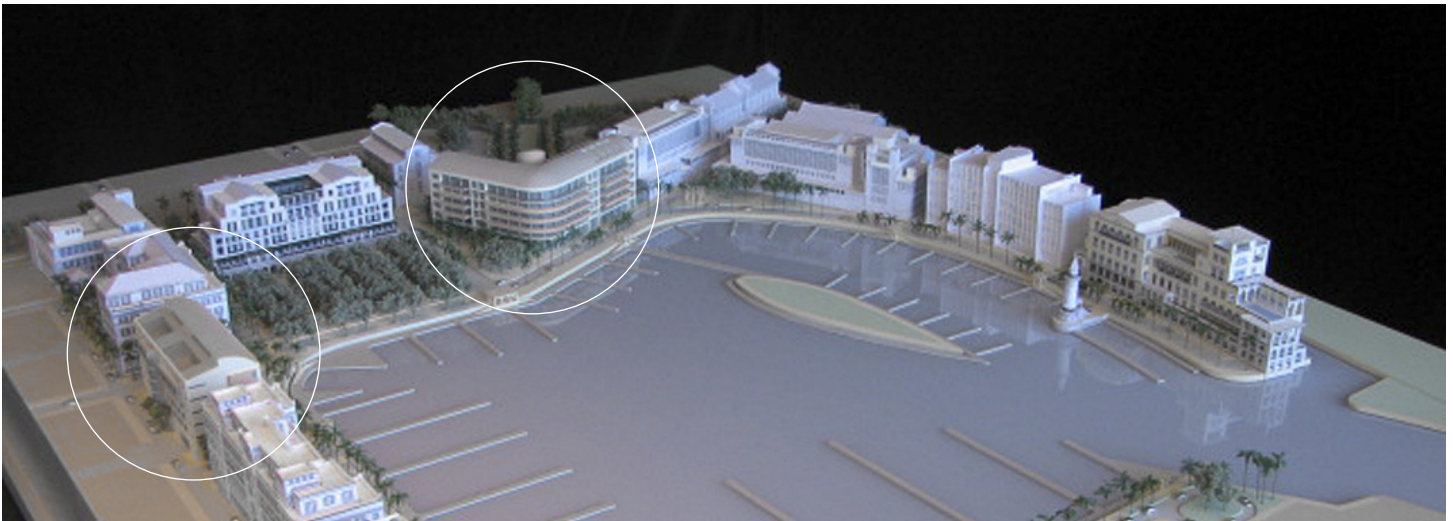


## Albany

Residential Condominium Buildings  
New Providence, The Bahamas



Set on 565 oceanfront acres, the Albany Residential Condominium Buildings comprise a new, luxury resort community and marina being developed by golf legends Tiger Woods and Ernie Els with the Tavistock Group, on New Providence Island, The Bahamas. Gwathmey Siegel is one of six internationally recognized residential architects creating buildings for the exclusive complex. The firm's two condominium structures, notable for their contemporary, urban image, have views of the entire complex, from the golf course to the ocean.

The club's master plan calls for a mega-yacht marina bordered by five- and six-story residential buildings, the majority of which will open directly onto the marina's edge, providing a short walk from the boat dock to condo. Community amenities include an 18-hole championship golf course, yacht club, beach club, fitness center, a variety of sports programs and support facilities as well as a system of parks and green spaces.

The first floor in each of the six-story buildings contains a lobby, retail stores, a parking garage and mechanical spaces. On the floors above, the apartment sizes range from one- to four-bedrooms, with penthouses offering five and six bedrooms.

The apartment and penthouse layouts feature open living/dining and entertainment areas with floor-to-ceiling windows that offer panoramic views of the outdoors. Generously sized bedrooms have windows recessed in the walls. Balconies on almost every floor wrap around the marina-side facades and provide an additional outdoor room.

The facades have a limestone base with painted stucco walls and aluminum window walls. Shaped roofs create a distinctive profile for passersby and provide a high vaulted ceiling for the penthouses. Visitors enter a lobby with a limestone floor, teak wood paneling, plaster walls and a metal ceiling. The kitchens feature wood and metal cabinets with stone tops and backsplashes; the baths have stone floors as well as stone vanities and bathtub tops.

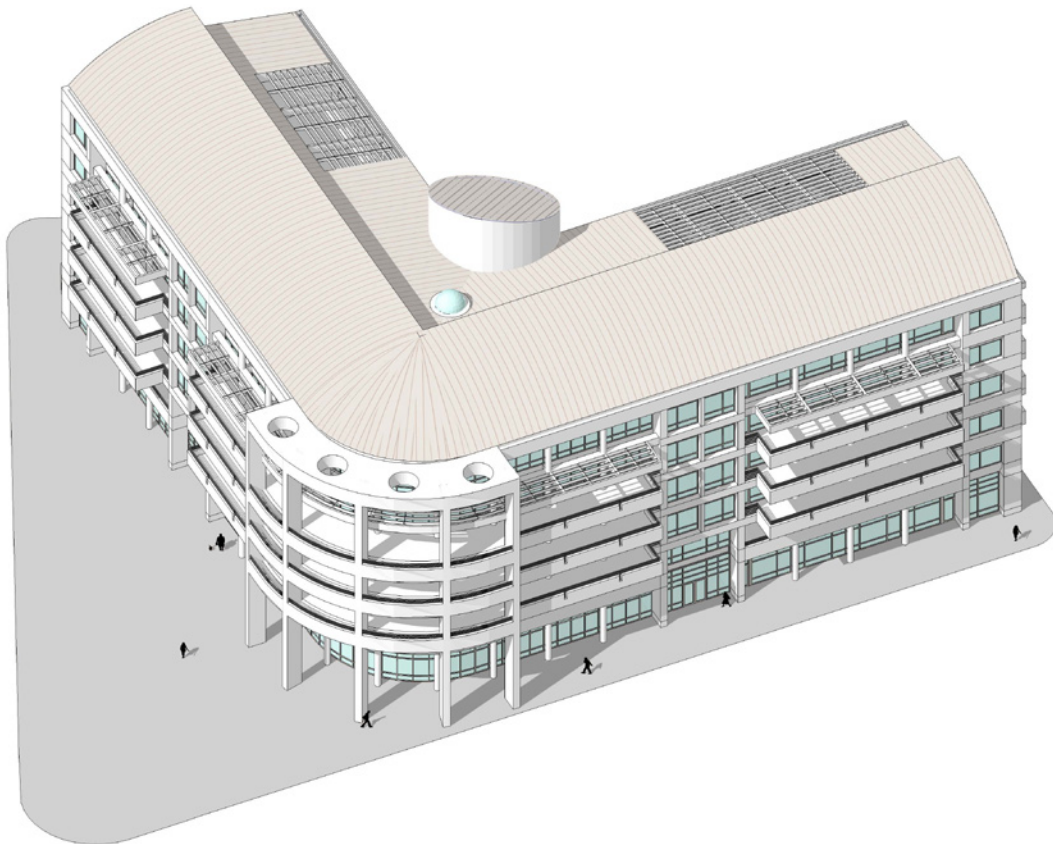


Master Plan



## Albany

Residential Condominium Buildings



Building # 3



Building # 3

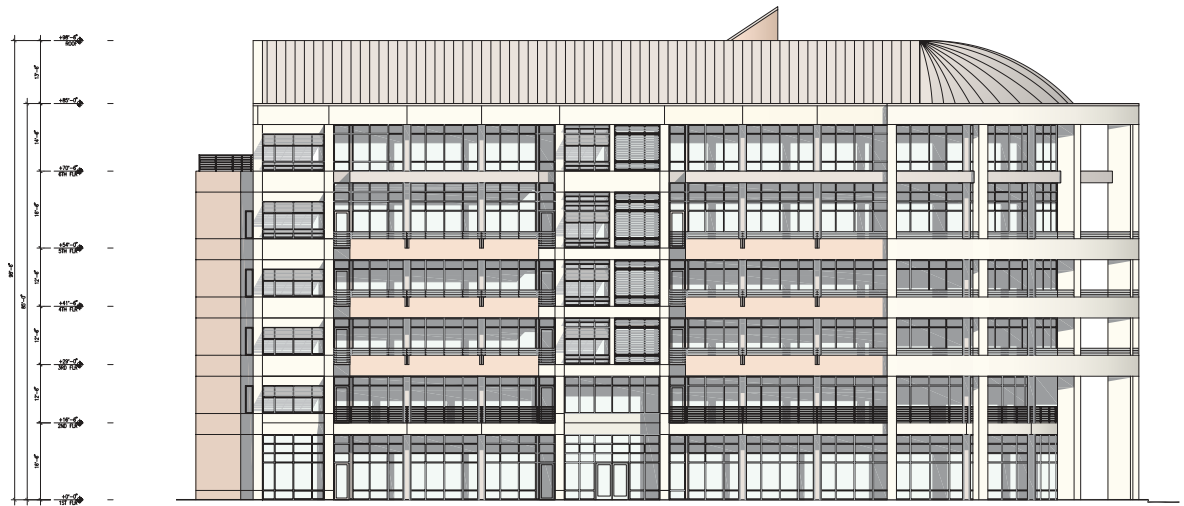
## Albany

### Residential Condominium Buildings

#### Key Project Information

- Two luxury condominium resort buildings
- Retail stores
- Parking garages
- Apartments with one to four bedrooms
- Penthouses with five and six bedrooms
- Open living/dining areas
- Balconies on almost all floors
- Stucco and glass facades
- Contemporary, urban image
- Expansive views

- completion 2009
- gsf 180,000



South West Elevation



South East Elevation